

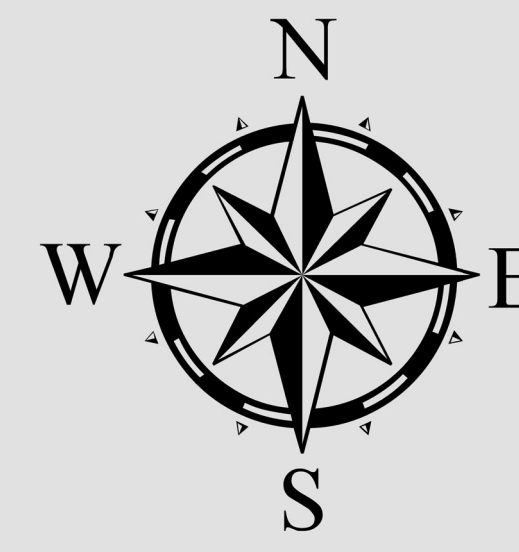


# FLORIDA STATE SENATE 2022

## ORANGE COUNTY, FLORIDA

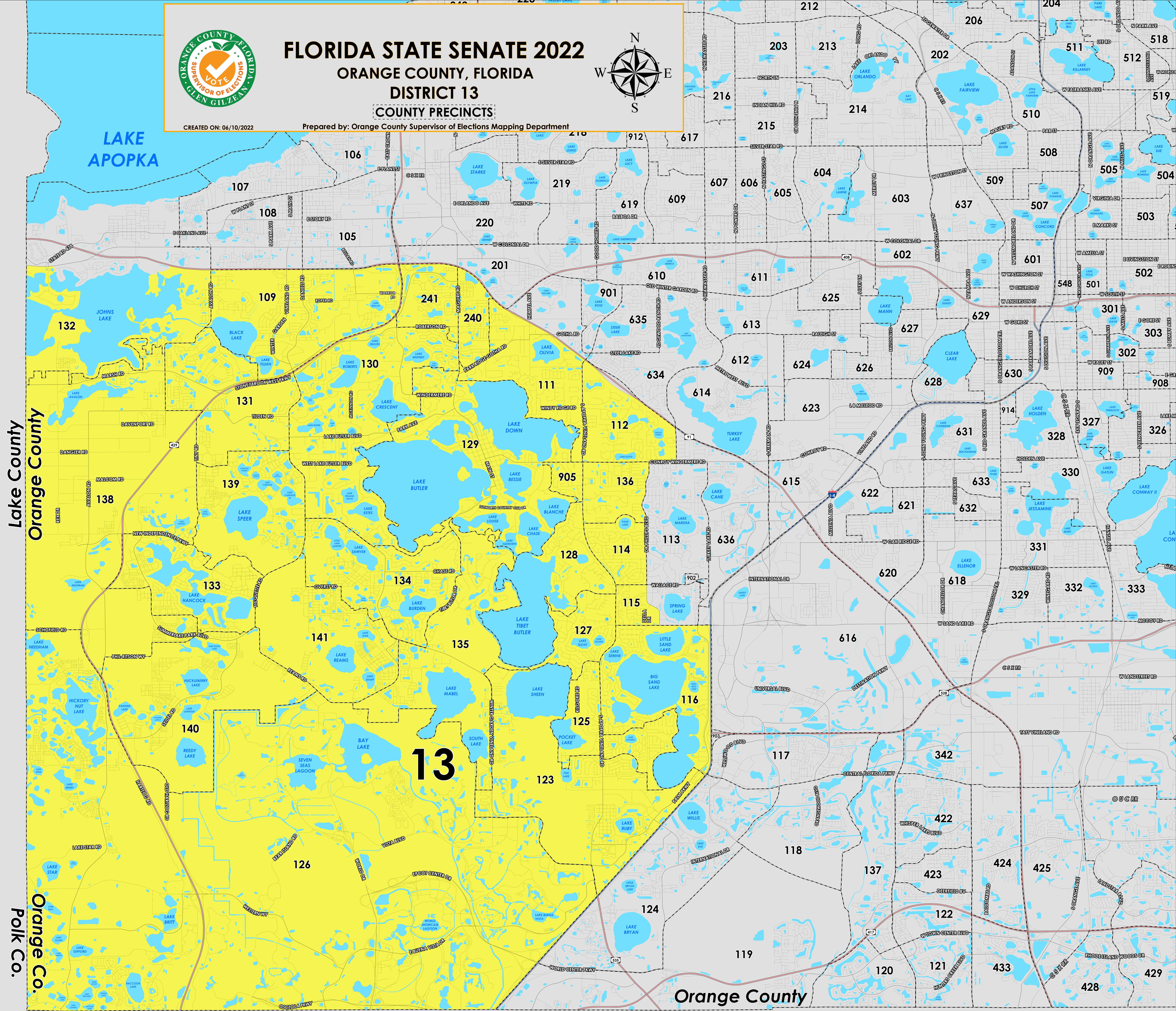
### DISTRICT 13

#### COUNTY PRECINCTS



CREATED ON: 06/10/2022

Prepared by: Orange County Supervisor of Elections Mapping Department



Lake County  
Orange County

Orange Co.  
Polk Co.

# 13



Orange County  
Osceola County



State Senate (2022) district 13 falls within Southwest Orange County. The northern boundary follows along Johns Lake and the Florida Turnpike. The western boundary follows along Lake/Orange County border. The southern boundary follows along Osceola/Orange County border. The eastern boundary follows along Interstate 4 and extends to Dr. Phillips Boulevard and South Hiawassee Road. A complete list of Orange County's precincts within district 13 can be found at the end of this document.

For more detailed views of other county and municipal precincts, [visit the District and Precinct Maps page](#). For more information about precinct boundaries, contact the [Orange County Supervisor of Elections office](#).

This map was produced by the Orange County Supervisor of Elections Mapping Department. More voter information can be found [on our website](#).

State Senate (2022) district 13 includes the following Orange County precincts:

- 109
- 111
- 112
- 114
- 115
- 116
- 123
- 125
- 126
- 127
- 128
- 129
- 130
- 131
- 132
- 133
- 134
- 135
- 136
- 138
- 139
- 140
- 141
- 240
- 241
- 905