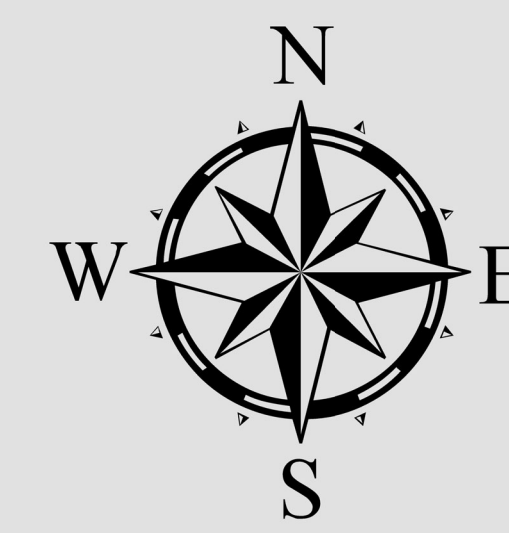


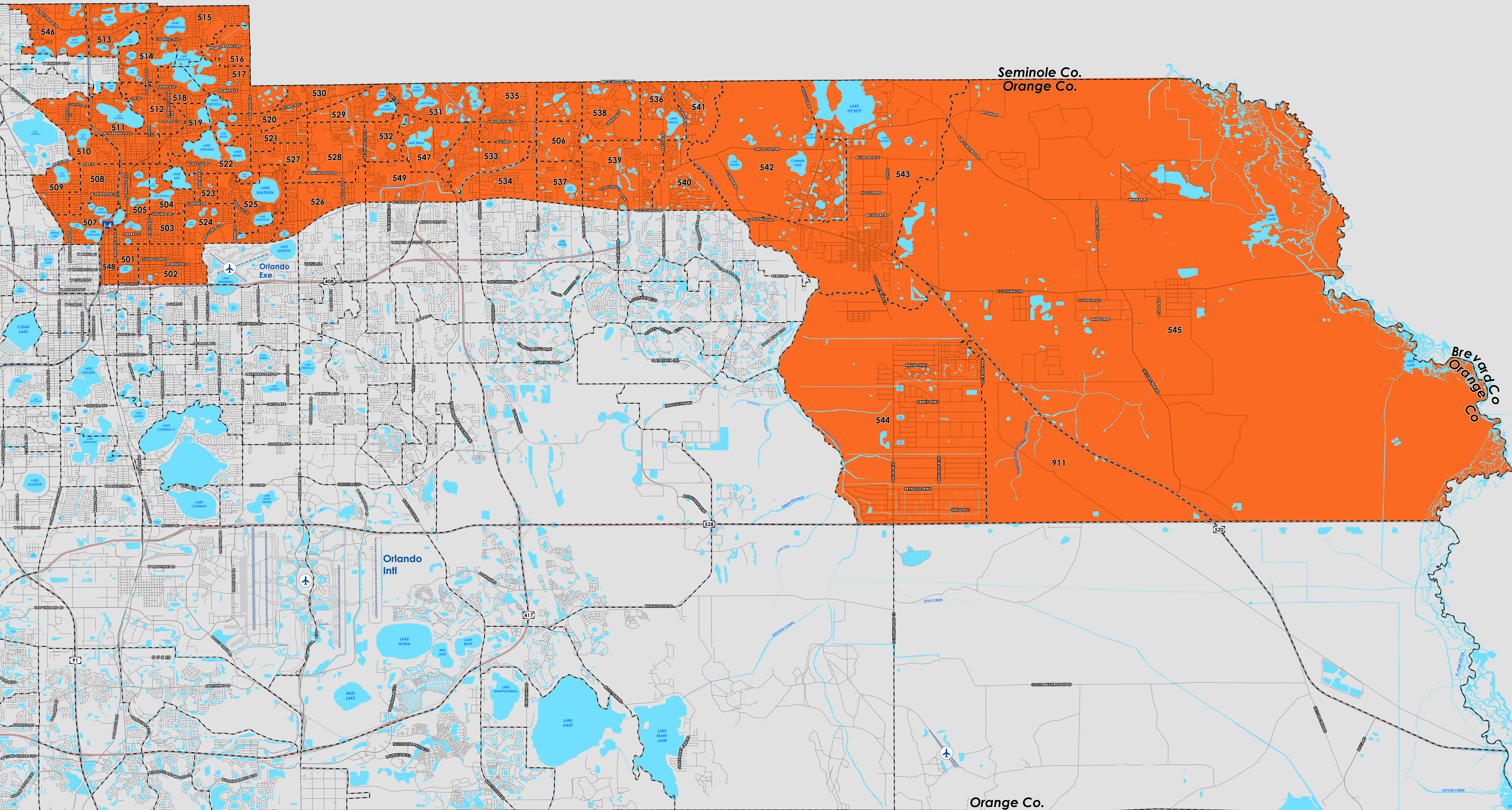


ORANGE COUNTY COMMISSION DISTRICT 5 COUNTY PRECINCTS



ADOPTED ON: 04/15/2024

Prepared by: Orange County Supervisor of Elections Mapping Department



Seminole Co.
Orange Co.

Brevard Co.
Orange Co.

Orange Co.
Osceola Co.

The Board of County Commission (2024) district 5 falls within Northeast Orange County. The northern boundary follows along the Seminole/Orange County border and the eastern boundary follows along the Brevard/Orange County border. The southern boundary follows along State Road 528 and extends along the Econlockhatchee River to Colonial Drive and a section of State Road 408 and the western boundary follows along a road combination from Interstate 4, Orange Blossom Trail and extends to Edgewater Drive. A complete list of Orange County precincts within district 5 can be found at the end of this document.

For more detailed views of each county and municipal precinct, [visit the District and Precinct Maps page](#). For more information about precinct boundaries, contact the [Orange County Supervisor of Elections office](#).

This map was produced by the Orange County Supervisor of Elections Mapping Department. More voter information can be found [on our website](#).

Board of County Commission (2024) district 5 includes the following Orange County precincts:

- 501
- 502
- 503
- 504
- 505
- 506
- 507
- 508
- 509
- 510
- 511
- 512
- 513
- 514
- 515
- 516
- 517
- 518
- 519
- 520
- 521
- 522
- 523
- 524
- 525
- 526

- 527
- 528
- 529
- 530
- 531
- 532
- 533
- 534
- 535
- 536
- 537
- 538
- 539
- 540
- 541
- 542
- 543
- 544
- 545
- 546
- 547
- 548
- 549
- 911