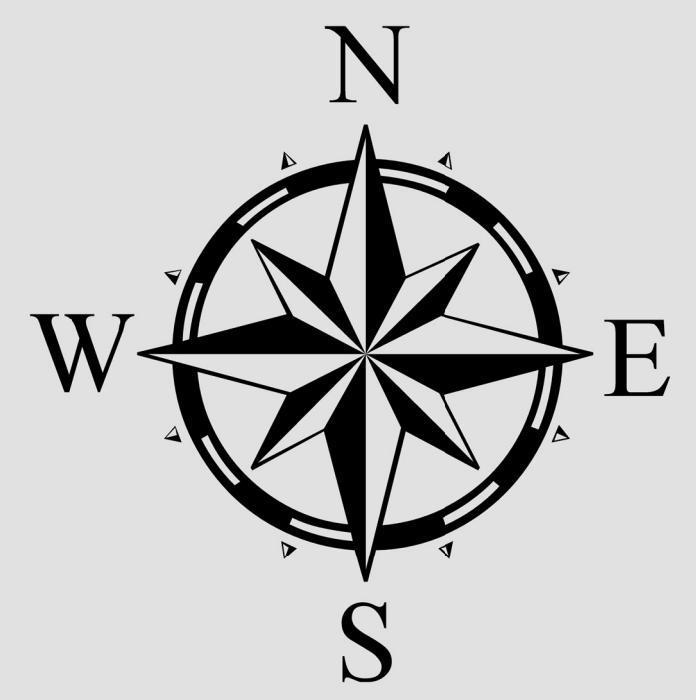


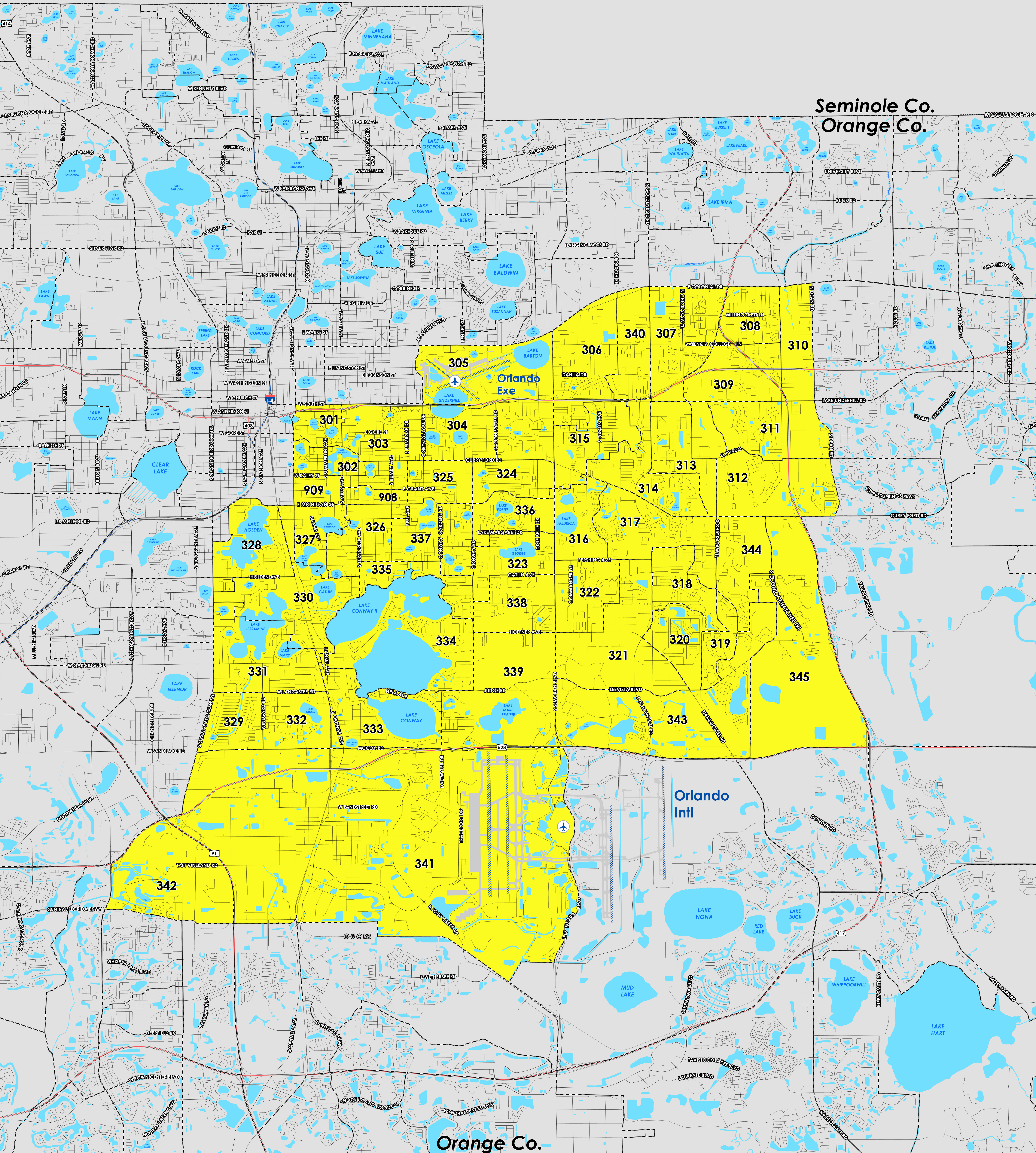


ORANGE COUNTY COMMISION DISTRICT 3 COUNTY PRECINCTS



ADOPTED ON: 04/15/2024

Prepared by: Orange County Supervisor of Elections Mapping Department



Seminole Co.
Orange Co.

Orange Co.
Osceola Co.

The Board of County Commission (2024) district 3 falls within central Orange County. The northern boundary follows along Colonial Drive and extends to a section of State Road 408. The western boundary follows along a section of South John Young Parkway and extends along State Road 528 to South Orange Blossom Trail. The southern boundary follows along Central Florida Parkway to a section of Boggy Creek Road. The eastern boundary is a combination of various roads, including South Semoran Boulevard, State Road 417 and South Dean Road. A complete list of Orange County precincts within district 3 can be found at the end of this document.

For more detailed views of each county and municipal precinct, [visit the District and Precinct Maps page](#). For more information about precinct boundaries, contact the [Orange County Supervisor of Elections office](#).

This map was produced by the Orange County Supervisor of Elections Mapping Department. More voter information can be found [on our website](#).

Board of County Commission (2024) district 3 includes the following Orange County precincts:

- 301
- 302
- 303
- 304
- 305
- 306
- 307
- 308
- 309
- 310
- 311
- 312
- 313
- 314
- 315
- 316
- 317
- 318
- 319
- 320
- 321
- 322
- 323
- 324
- 325
- 326

- 327
- 328
- 329
- 330
- 331
- 332
- 333
- 334
- 335
- 336
- 337
- 338
- 339
- 340
- 341
- 342
- 343
- 344
- 345
- 908
- 909