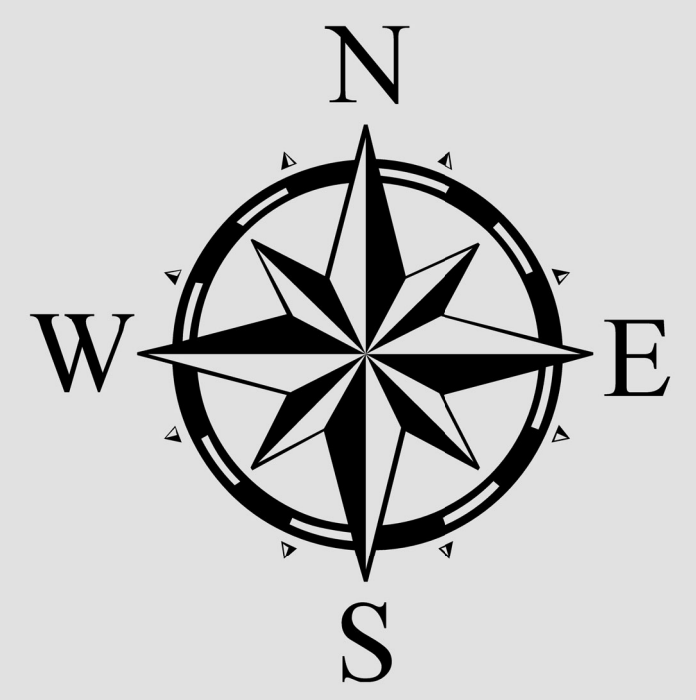




ORANGE COUNTY COMMISSION DISTRICT 1 COUNTY PRECINCTS



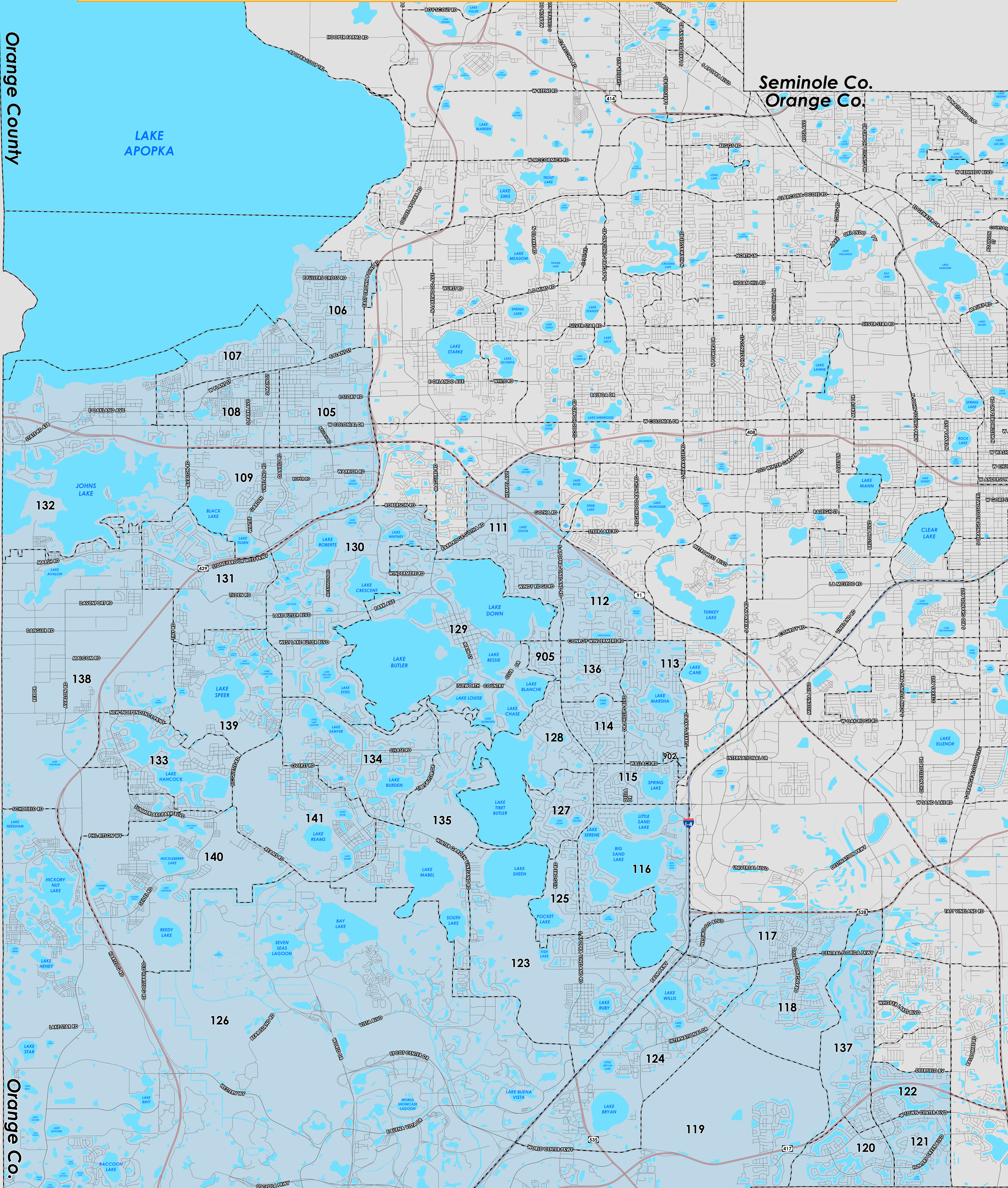
ADOPTED ON: 04/15/2024

Prepared by: Orange County Supervisor of Elections Mapping Department

Orange County
Lake County

Seminole Co.
Orange Co.

Orange Co.
Polk Co.



The Board of County Commission (2024) district 1 falls within southwest Orange County. The northern boundary follows through southeast Lake Apopka. The western boundary follows the Lake/Orange County border while the southern boundary follows the Osceola/Orange County border and extends to South Orange Blossom Trail. The eastern boundary is a combination of various roads, including South Orange Blossom Trail, I-4, Florida Turnpike, and State Road 429. A complete list of Orange County precincts within district 1 can be found at the end of this document.

For more detailed views of each county and municipal precinct, [visit the District and Precinct Maps page](#). For more information about precinct boundaries, contact the [Orange County Supervisor of Elections office](#).

This map was produced by the Orange County Supervisor of Elections Mapping Department. More voter information can be found [on our website](#).

Board of County Commission (2024) district 1 includes the following Orange County precincts:

- 105
- 106
- 107
- 108
- 109
- 111
- 112
- 113
- 114
- 115
- 116
- 117
- 118
- 119
- 120
- 121
- 122
- 123
- 124
- 125
- 126
- 127
- 128
- 129
- 130
- 131
- 132

- 133
- 134
- 135
- 136
- 137
- 138
- 139
- 140
- 141
- 902
- 903
- 905