

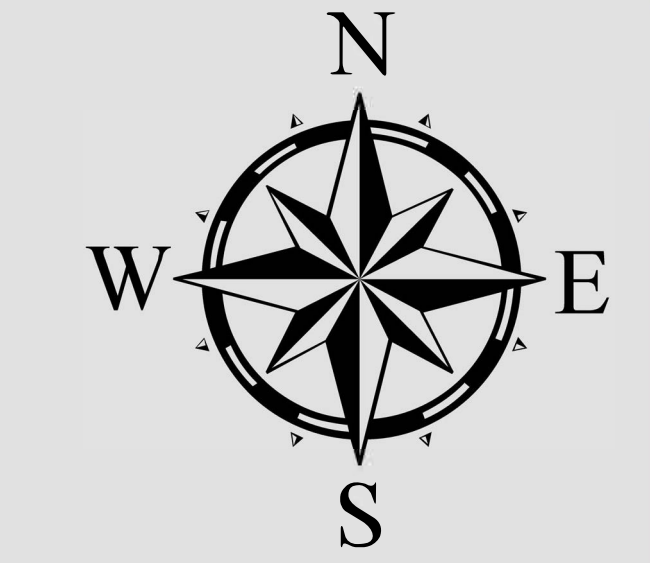


POLLING PLACE

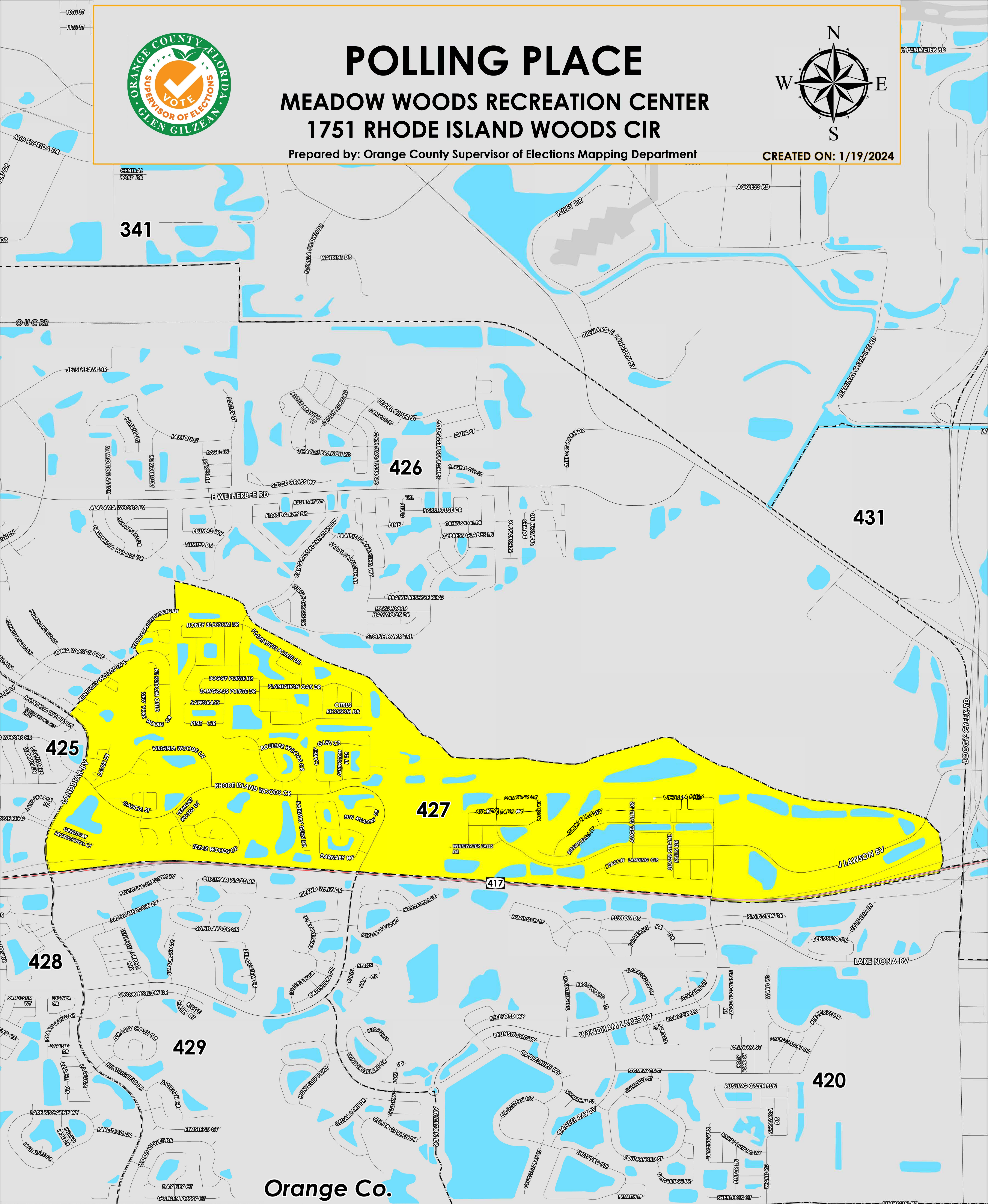
MEADOW WOODS RECREATION CENTER

1751 RHODE ISLAND WOODS CIR

Prepared by: Orange County Supervisor of Elections Mapping Department



CREATED ON: 1/19/2024



Orange Co.
Osceola Co.

The Polling Place for Precinct 427 is Meadow Woods Recreation Center at 1751 Rhode Island Woods Circle.

Precinct 427 (2024) northern and eastern boundaries follow along Kentucky Woods Lane East then extends just south of Sumter Drive and continues parallel north of Plantation Pointe Drive, Canoe Creek Falls Drive, Victoria Falls Drive, and J. Lawson Boulevard. The western boundary follows along Landstar Boulevard, and the southern boundary follows along State Road 417.

427S is with district assignments of U.S. Congress 9, State Senate 25, State House 44, County Commission 4, and School Board 3.

For more detailed views of other county and municipal precincts, [visit the District and Precinct Maps page](#). For more information about precinct boundaries, contact the [Orange County Supervisor of Elections office](#)

This map was produced by the Orange County Supervisor of Elections Mapping Department. Additional voter information can be found [on our website](#).