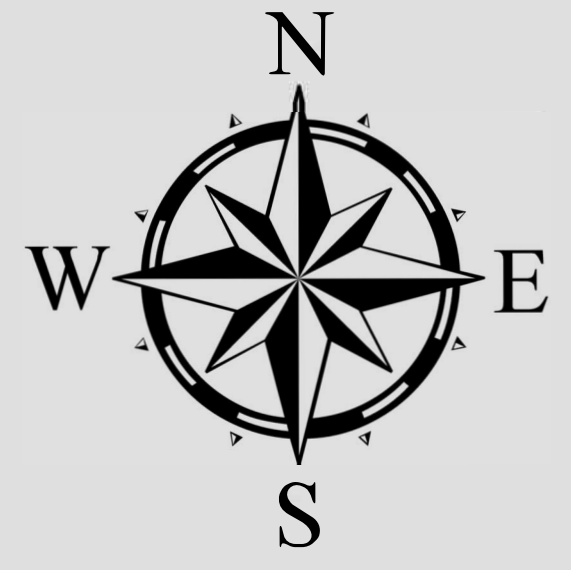




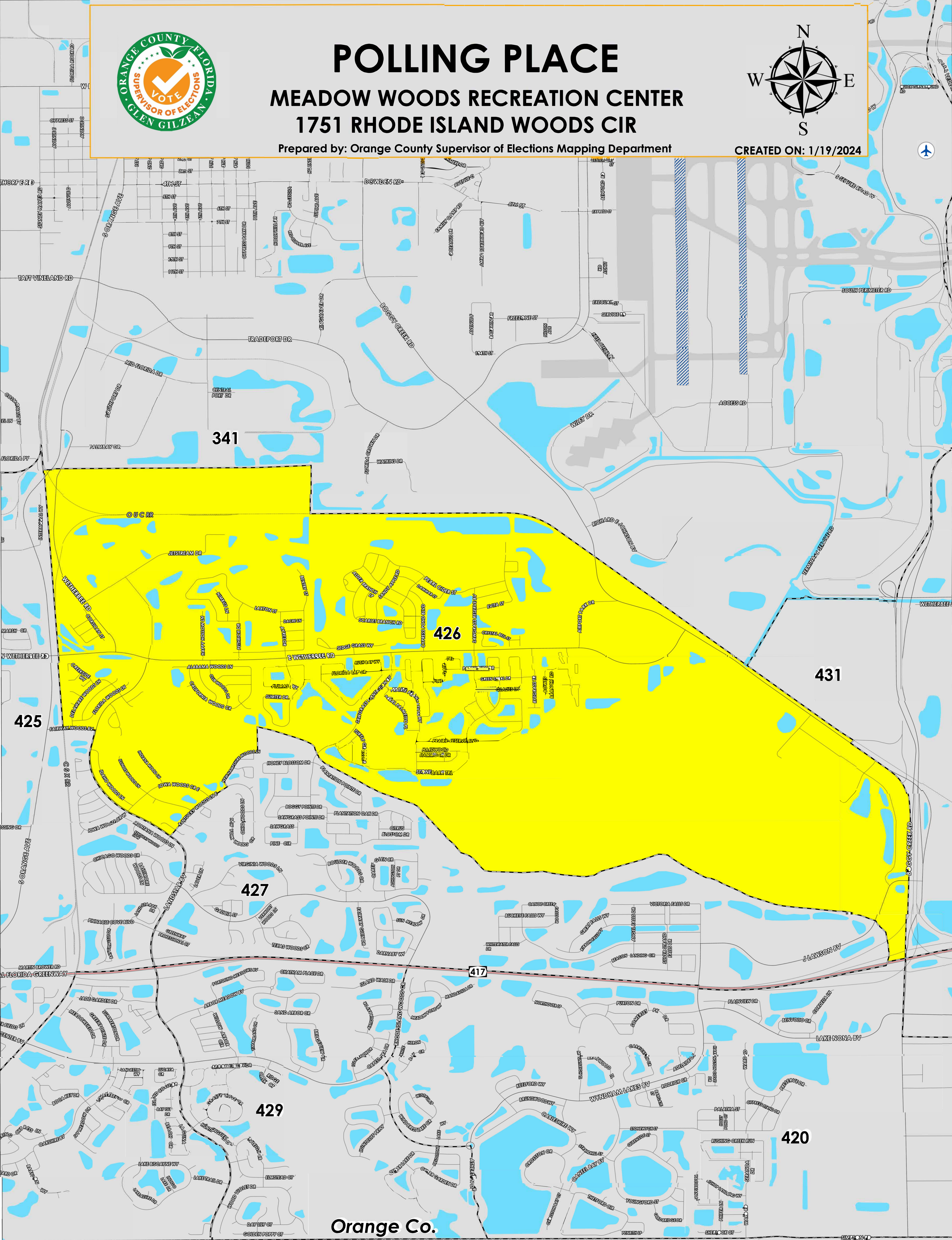
POLLING PLACE

MEADOW WOODS RECREATION CENTER
1751 RHODE ISLAND WOODS CIR

Prepared by: Orange County Supervisor of Elections Mapping Department



CREATED ON: 1/19/2024



Orange Co.
Osceola Co.

The Polling Place for Precinct 426 is Meadow Woods Recreation Center at 1751 Rhode Island Woods Circle.

Precinct 426 (2024) northern boundary follows parallel south of Palmbay Drive then continues to just north of Pearl Cider Street. The western boundary follows parallel east of South Orange Avenue. The southern boundary follows along Landstar Boulevard, then continues to Kentucky Woods Lane and extends just between Stone Bark Trail and Plantation Oak Drive then north of Victoria Falls Drive and stops on State Road 417. The eastern boundary follows along Boggy Creek Road.

Precinct 426 contains sub precinct of:

426A is with district assignments of U.S. Congress 9, State Senate 25, State House 44, County Commission 4, and School Board 3.

426Z is with district assignments of U.S. Congress 9, State Senate 17, State House 44, County Commission 4, and School Board 3.

For more detailed views of other county and municipal precincts, [visit the District and Precinct Maps page](#). For more information about precinct boundaries, contact the [Orange County Supervisor of Elections office](#)

This map was produced by the Orange County Supervisor of Elections Mapping Department. Additional voter information can be found [on our website](#).