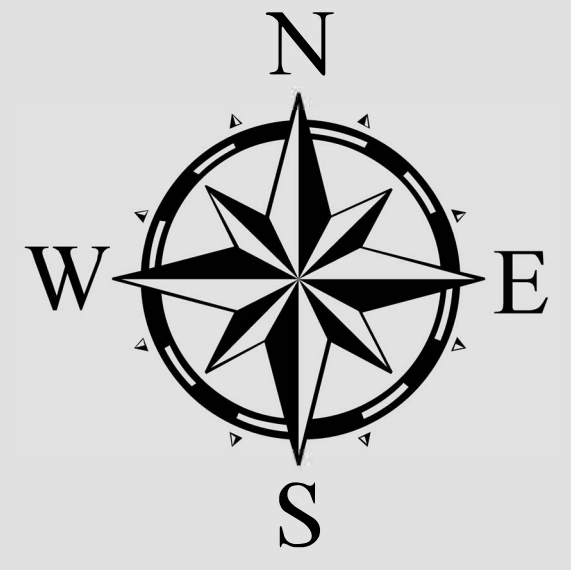


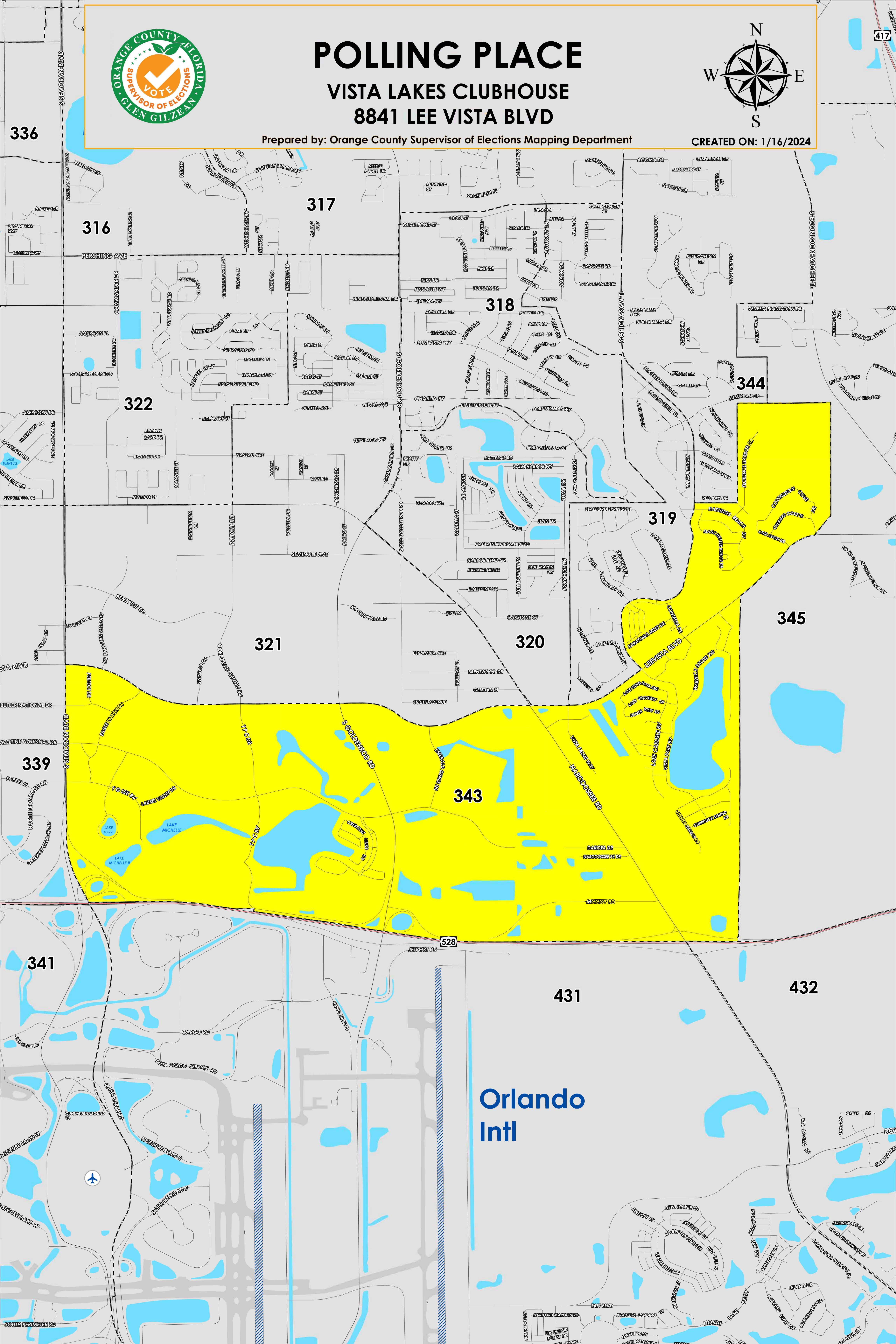
POLLING PLACE

VISTA LAKES CLUBHOUSE 8841 LEE VISTA BLVD



Prepared by: Orange County Supervisor of Elections Mapping Department

CREATED ON: 1/16/2024



336

316

317

318

344

322

319

345

321

320

343

339

341

431

432

Orlando Intl

The Polling Place for Precinct 343 is Vista Lakes Clubhouse at 8841 Lee Vista Boulevard.

Precinct 343 (2024) northern boundary follows a road combination south of Tivoli Chase Drive and Suburban Drive, parallel north of Hastings Beach Boulevard then extends along Lee Vista Boulevard. The western boundary follows a road combination of Hopespring Drive, parallel east of Lake Melrose Drive and Lake Pembroke Place and extends to South Semoran Boulevard. The southern boundary follows along State Road 528 and extends to a section of Lee Vista Boulevard. The eastern boundary follows parallel east of Vista Park Boulevard and Warwick Shore Crossing and extends northeast of Covington Cove Way.

Precinct 343A is with district assignments of U.S. Congress 9, State Senate 17, State House 43, County Commission 3, and School Board 2.

Precinct 343B is with district assignments of U.S. Congress 9, State Senate 17, State House 43, County Commission 3, School Board 2 and Special District 7.

For more detailed views of other county and municipal precincts, [visit the District and Precinct Maps page](#). For more information about precinct boundaries, contact the [Orange County Supervisor of Elections office](#)

This map was produced by the Orange County Supervisor of Elections Mapping Department. Additional voter information can be found [on our website](#).