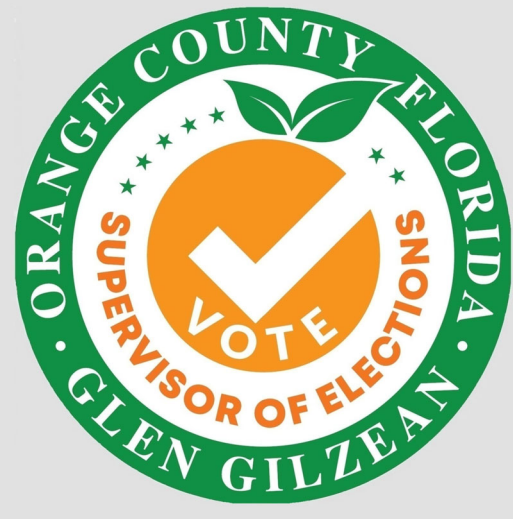


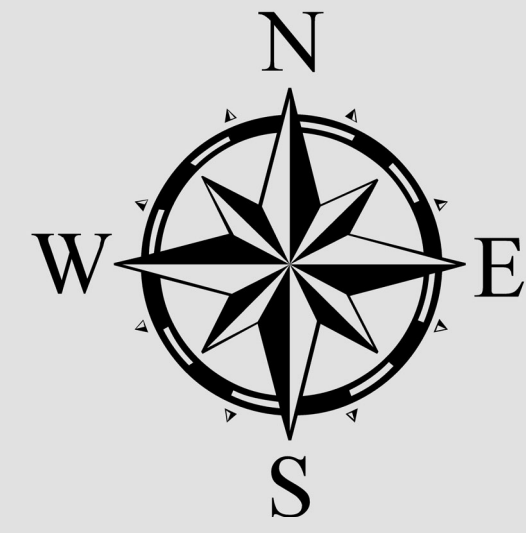
LAKE SHEEN



POLLING PLACE

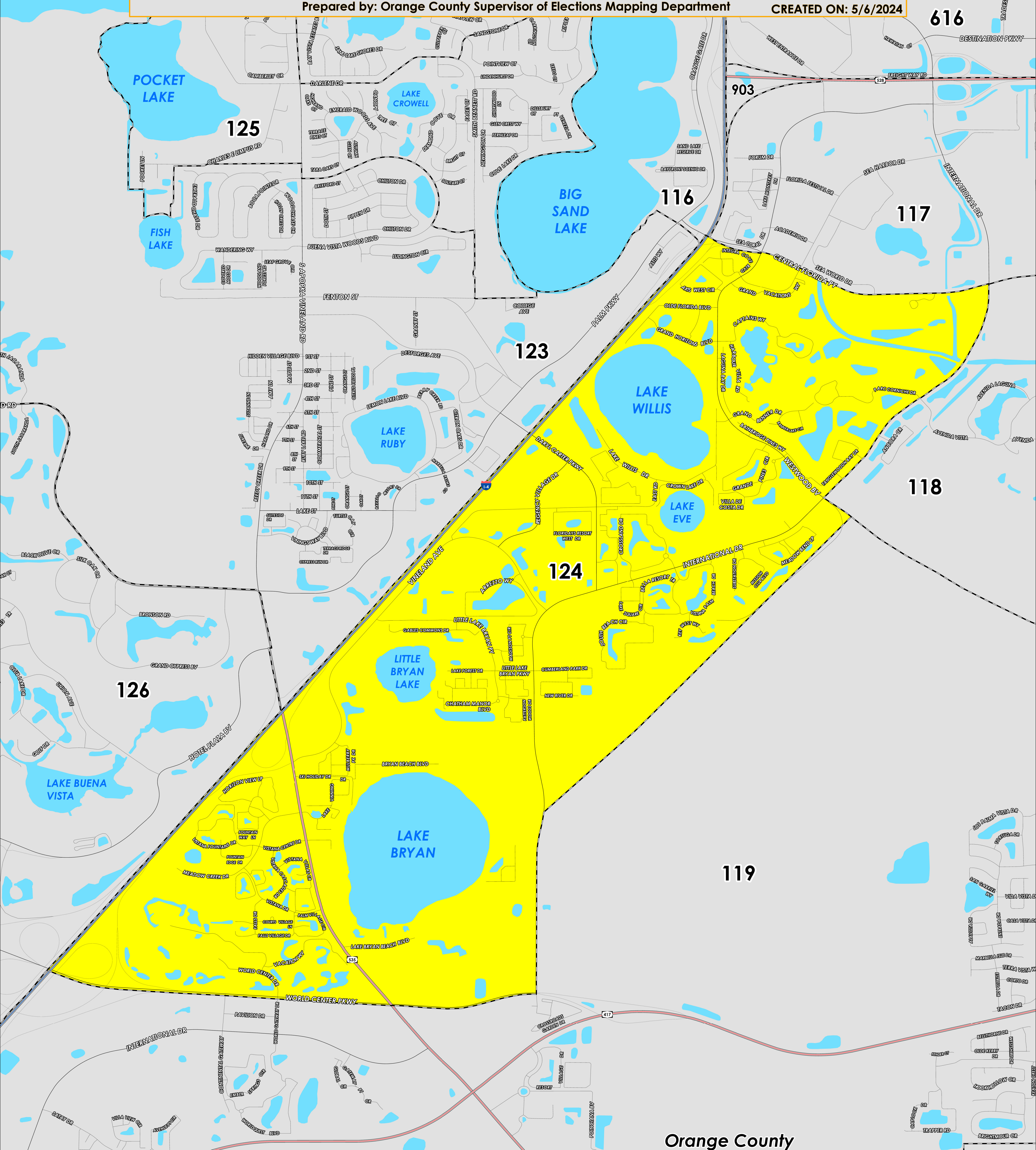
CENTRAL PARKWAY BAPTIST CHURCH

5281 CENTRAL FLORIDA PARKWAY



Prepared by: Orange County Supervisor of Elections Mapping Department

CREATED ON: 5/6/2024



Orange County
Osceola County

The Polling Place for Precinct 124 is Central Parkway Baptist Church at 5281 Central Florida Parkway.

Precinct 124 (2024) northern boundary follows along Freight Way Road. The western boundary follows along the Interstate 4. The southern boundary follows along the Osceola/Orange County border and continues to World Center Drive. The eastern boundary follows a combination of State Road 535, Westwood Boulevard, and extends to International Drive.

Precinct 124 contains sub precincts of:

124A is with district assignments of U.S. Congress 9, State Senate 25, State House 44, County Commission 1, and School Board 4.

124B is with district assignments of U.S. Congress 9, State Senate 25, State House 44, County Commission 1, and School Board 3.

124C is with district assignments of U.S. Congress 9, State Senate 25, State House 44, County Commission 1, School Board 3 and Special District 26.

For more detailed views of other county and municipal precincts, [visit the District and Precinct Maps page](#). For more information about precinct boundaries, contact the [Orange County Supervisor of Elections office](#)

This map was produced by the Orange County Supervisor of Elections Mapping Department. Additional voter information can be found [on our website](#).