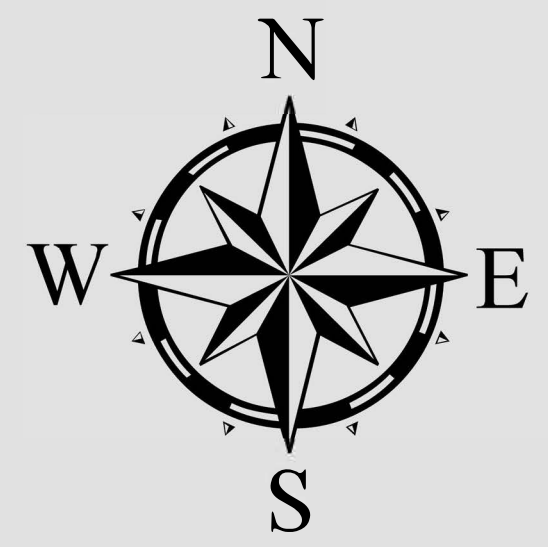


# CITY OF BAY LAKE

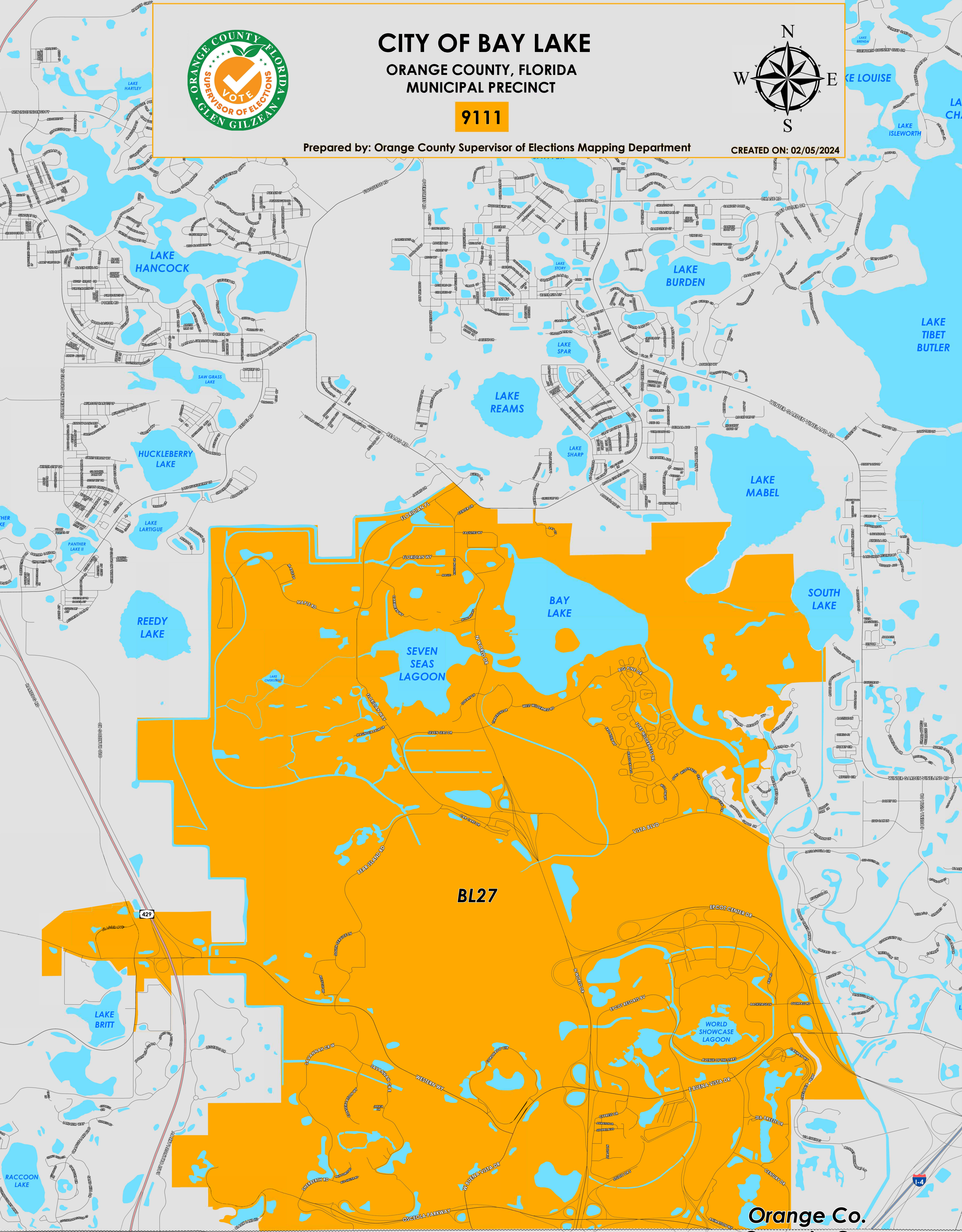
ORANGE COUNTY, FLORIDA  
MUNICIPAL PRECINCT

9111



Prepared by: Orange County Supervisor of Elections Mapping Department

CREATED ON: 02/05/2024



Orange Co.  
Osceola Co.

The City of Bay Lake in Orange County, Florida contains precinct BL27 (9111).

Municipal precinct BL27 approximately extends north to Reams Road and the southern edge of Lake Mabel and ends in the south at the Orange/Osceola County border. The western boundary extends just west of Osceola Parkway and Flagler Avenue. The eastern boundary ends just east of Epcot Center Drive and at the western border of South Lake. Within these borders are many sections which are considered unincorporated Orange County, and not part of the City of Bay Lake. This municipal precinct also includes the following Orange County precincts:

- 126

For more detailed views of other county and municipal precincts, including their precinct splits, visit the District and Precinct Maps page on <https://www.ocfelections.gov/district-and-precinct-maps>. For more information about precinct boundaries, contact the Orange County Supervisor of Elections office at <https://www.ocfelections.gov/contact-us>.

This map was produced by the Orange County Supervisor of Elections Mapping Department. More voter information can be found at <https://www.ocfelections.gov/contact-us>.