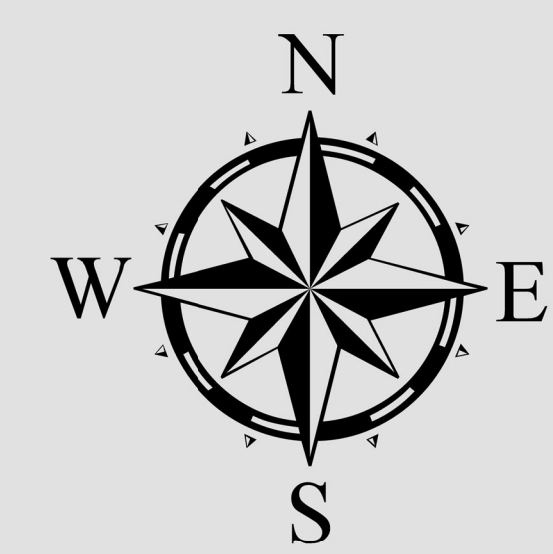




# PRECINCT 205

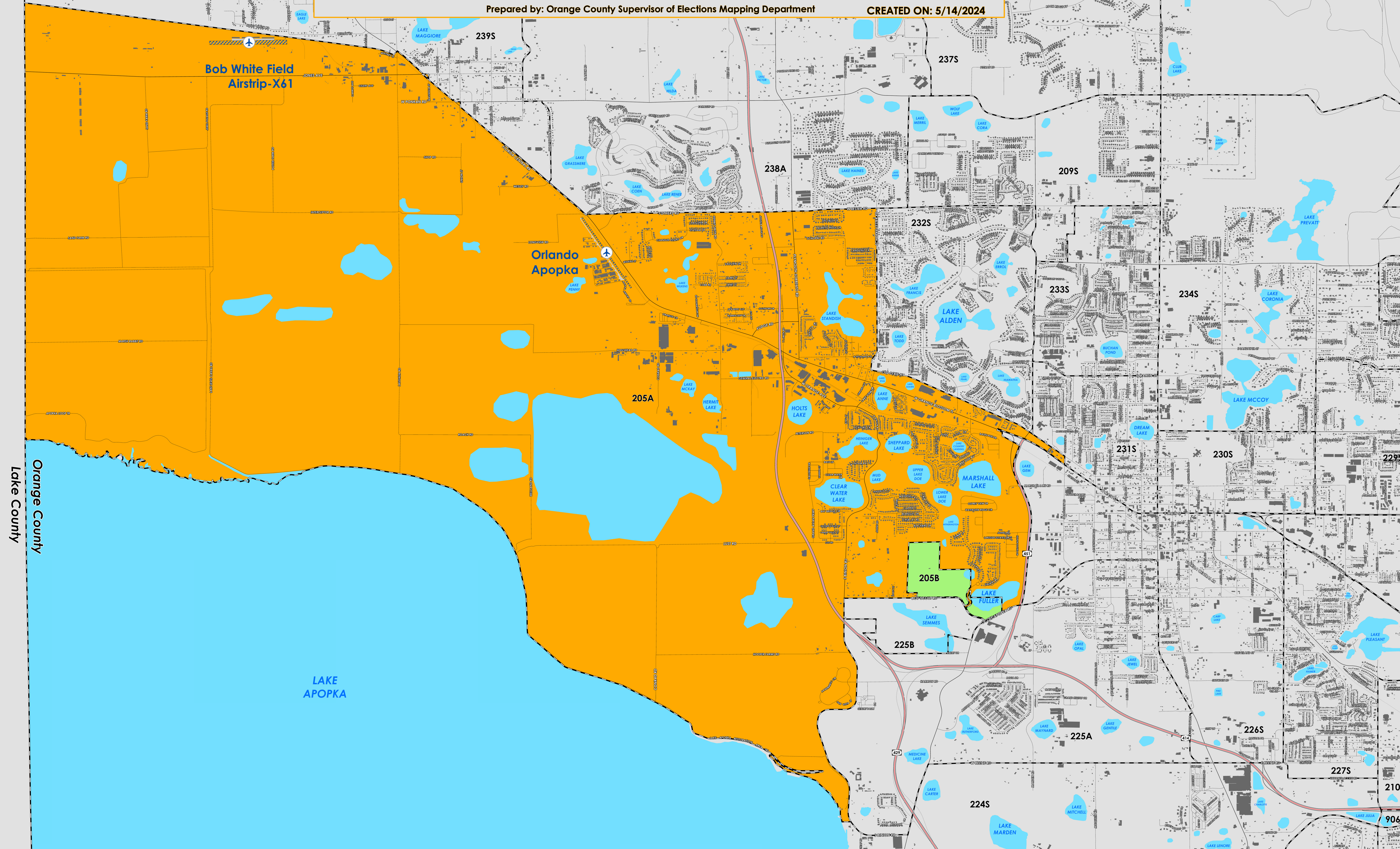
COUNTY PRECINCTS

PRECINCT	U.S. CONGRESS	SENATE	HOUSE COMMISSION	SCHOOL	CITY	CITY PRECINCT	SPECIAL DIST
205A	11	15	39	2	7		
205B	11	15	39	2	7		30



Prepared by: Orange County Supervisor of Elections Mapping Department

CREATED ON: 5/14/2024



Orange County  
Lake County

906S

Precinct 205 (2024) northern boundary follows parallel north of Jones Avenue and then continues to North Orange Blossom Trail and Yothers Road. The western boundary follows along the Lake/Orange County border and stops at northern Lake Apopka. The southern boundary follows along the northern shore of Lake Apopka, and the eastern boundary follows along South Binion Road and continues onto State Road 451 then to Schopke Lester Road.

Precinct 205A is with district assignments of U.S. Congress 11, State Senate 15, State House 39, County Commission 2, and School Board 7.

Precinct 205B is with district assignments of U.S. Congress 11, State Senate 15, State House 39, County Commission 2, School Board 7 and Special District 30.

For more detailed views of other county and municipal precincts, [visit the District and Precinct Maps page](#). For more information about precinct boundaries, contact the [Orange County Supervisor of Elections office](#)

This map was produced by the Orange County Supervisor of Elections Mapping Department. Additional voter information can be found [on our website](#).