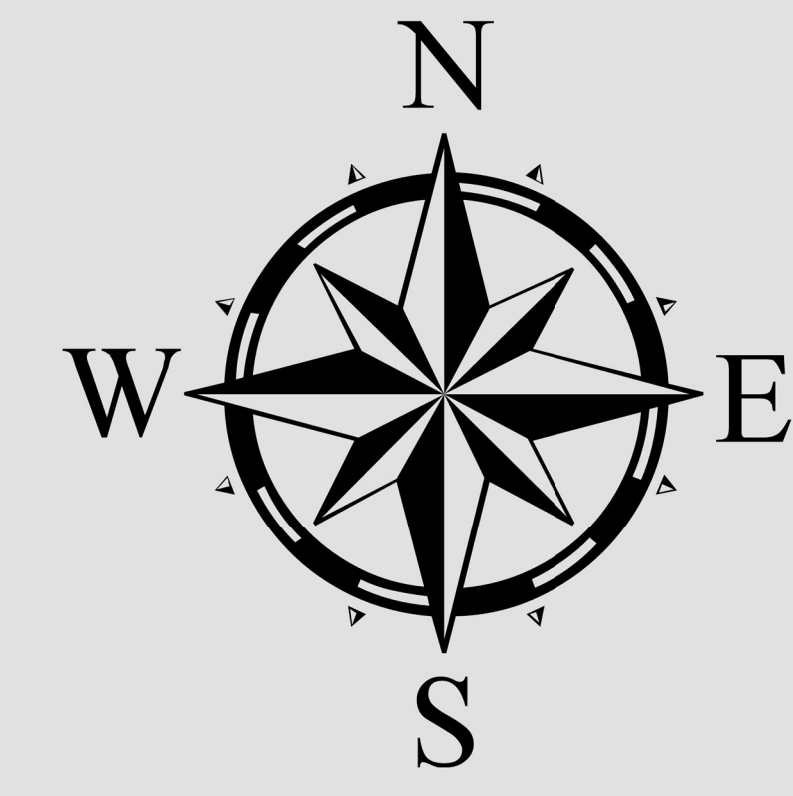




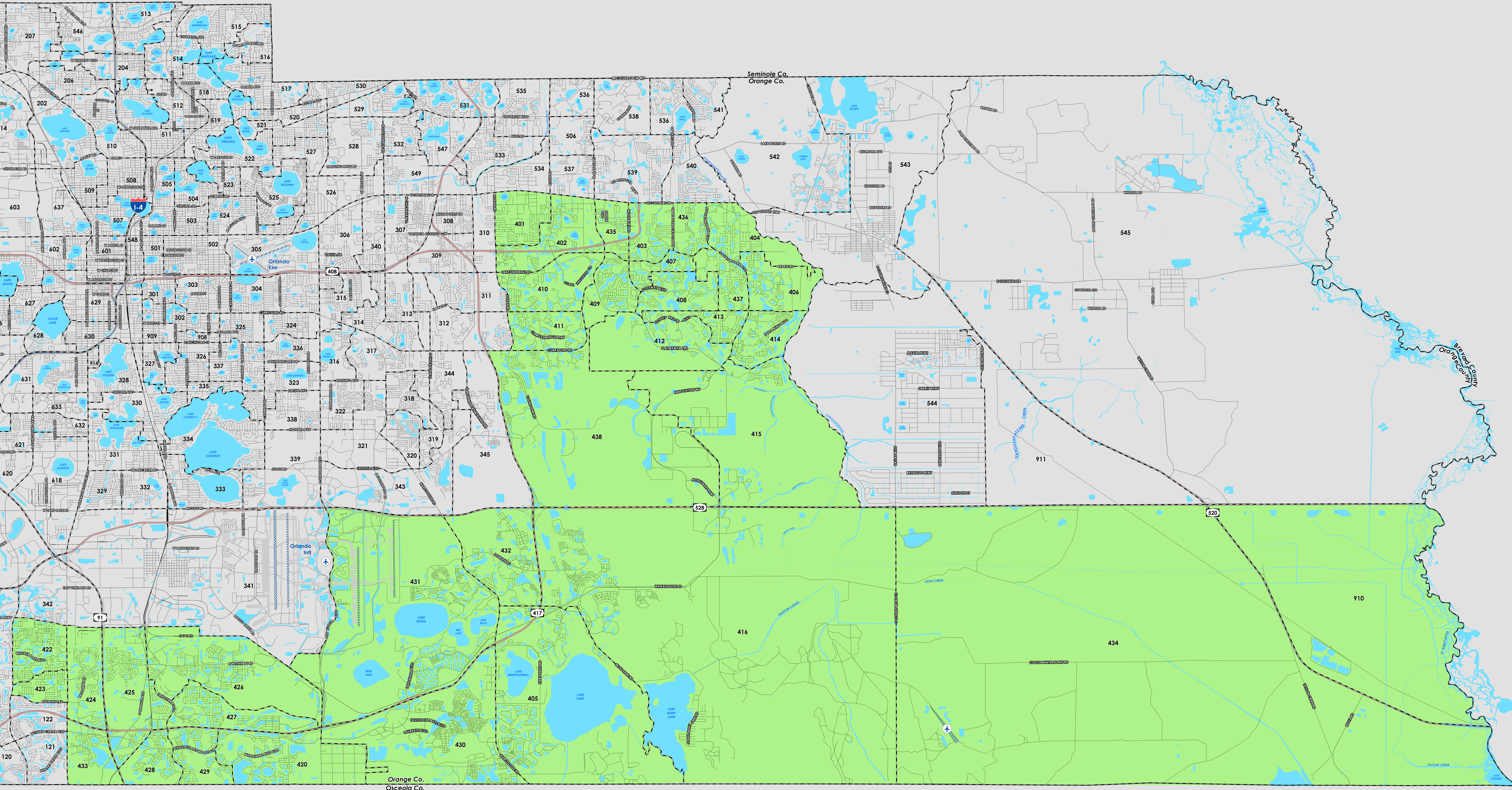
2022 ORANGE COUNTY COMMISION DISTRICT 4

COUNTY PRECINCTS

Bill Cowles, Supervisor of Elections
Prepared by: Orange County Supervisor of Elections Mapping Department



CREATED ON: 6/7/2022



Board of County Commission (2022) district 4 falls within Southeast Orange County. The northern boundary follows along a portion of Boggy Creek Road to sections of State Road 528 and East Colonial Drive. The western boundary runs parallel west of the Florida Turnpike and State Road 417. The southern boundary begins at a section of Florida turnpike and follows parallel to State Road 528. The eastern boundary follows the St. John's River and runs into the Econlockhatchee River west of Brevard County. A complete list of Orange County precincts within district 4 can be found at the end of this document.

For more detailed views of each county and municipal precinct, [visit the District and Precinct Maps page](#). For more information about precinct boundaries, contact the [Orange County Supervisor of Elections office](#).

This map was produced by the Orange County Supervisor of Elections Mapping Department. Bill Cowles is the Supervisor of Elections at the time of production. More voter information can be found [on our website](#).

Board of County Commission (2022) District 4 includes the following Orange County precincts:

- 401
- 402
- 403
- 404
- 405
- 406
- 407
- 408
- 409
- 410
- 411
- 412
- 413
- 414
- 415
- 416
- 420
- 422
- 423
- 424
- 425
- 426
- 427
- 428
- 429

- 431
- 432
- 433
- 434
- 437
- 438
- 910