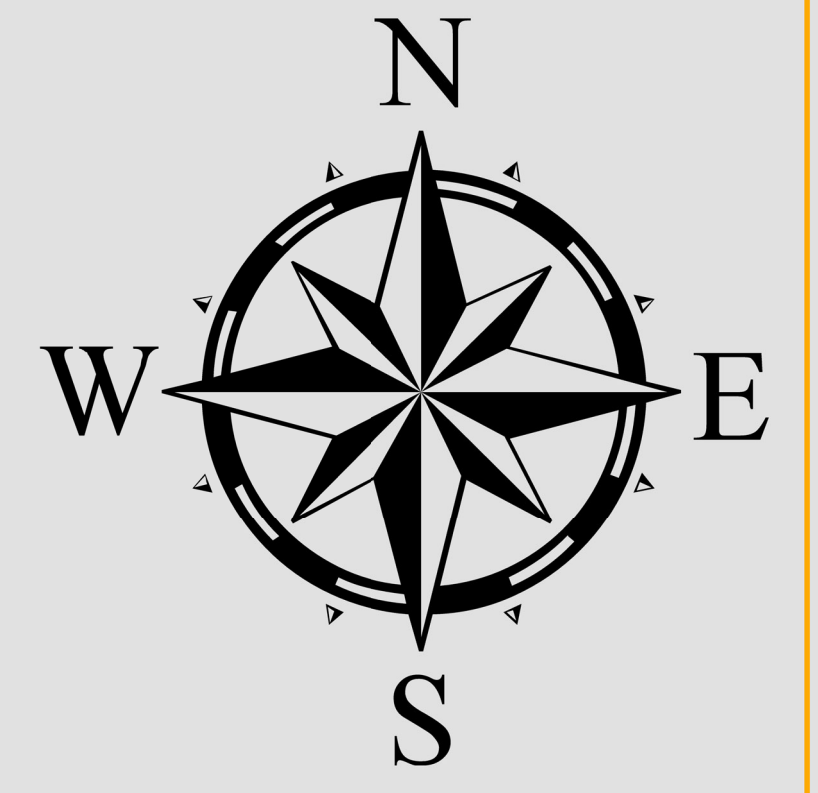




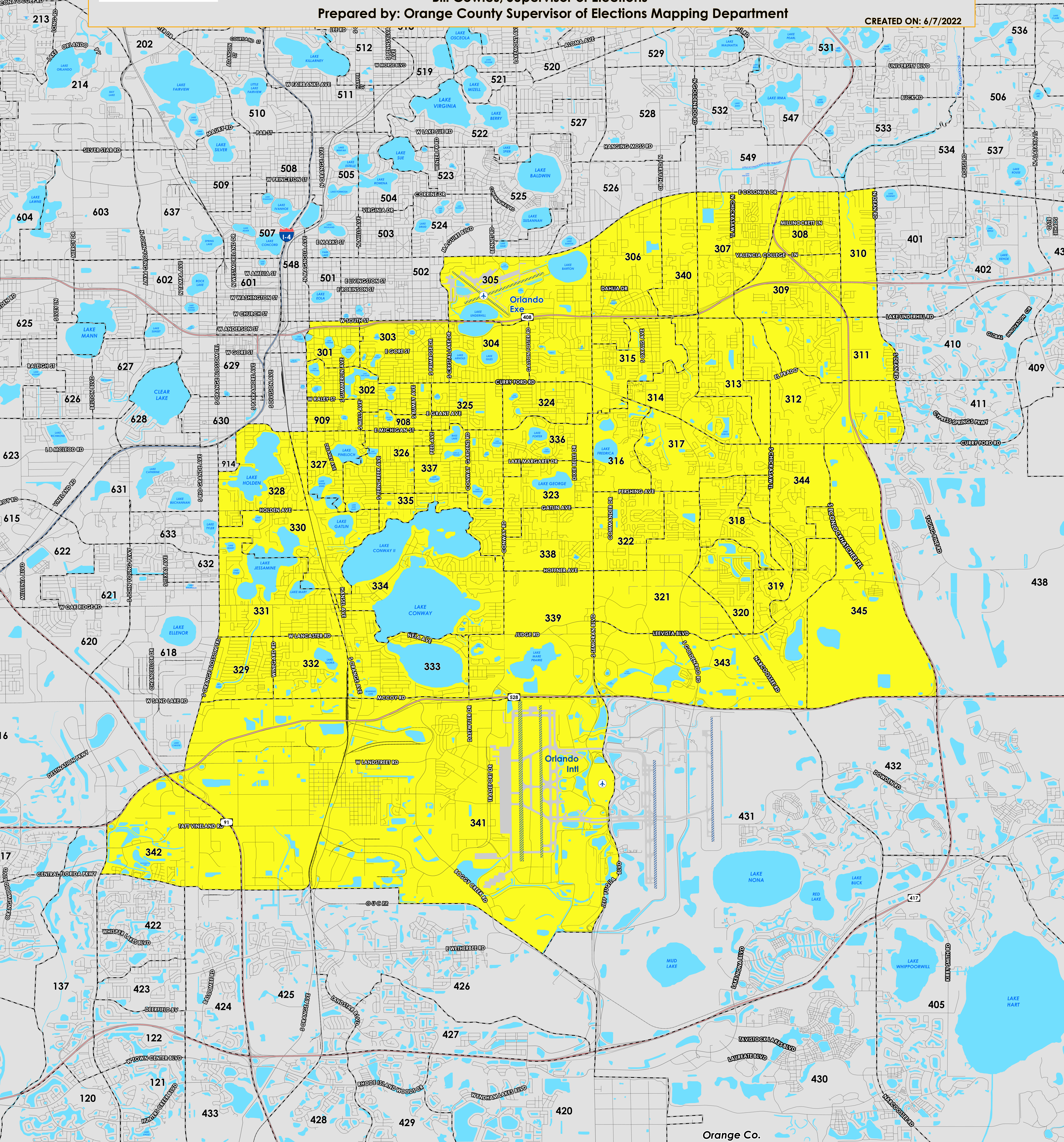
# 2022 ORANGE COUNTY COMMISSION DISTRICT 3

## COUNTY PRECINCTS

Bill Cowles, Supervisor of Elections  
Prepared by: Orange County Supervisor of Elections Mapping Department



CREATED ON: 6/7/2022



Orange Co.  
Osceola Co.



The Board of County Commission (2022) district 3 falls within central Orange County. The northern boundary follows along Colonial Drive and extends to a section of State Road 408. The western boundary follows along a section of South John Young Parkway and extends along State Road 528 to South Orange Blossom Trail. The southern boundary follows along Central Florida Parkway to a section of Boggy Creek Road. The eastern boundary is a combination of various roads, including South Semoran Boulevard, State Road 417 and South Dean Road. A complete list of Orange County precincts within district 3 can be found at the end of this document.

For more detailed views of each county and municipal precinct, [visit the District and Precinct Maps page](#). For more information about precinct boundaries, contact the [Orange County Supervisor of Elections office](#).

This map was produced by the Orange County Supervisor of Elections Mapping Department. Bill Cowles is the Supervisor of Elections at the time of production. More voter information can be found [on our website](#).

Board of County Commission (2022) district 3 includes the following Orange County precincts:

- 301
- 302
- 303
- 304
- 305
- 306
- 307
- 308
- 309
- 310
- 311
- 312
- 313
- 314
- 315
- 316
- 317
- 318
- 319
- 320
- 321
- 322
- 323
- 324
- 325

- 326
- 327
- 328
- 329
- 330
- 331
- 332
- 333
- 334
- 335
- 336
- 337
- 338
- 339
- 340
- 341
- 342
- 343
- 344
- 345
- 908
- 909