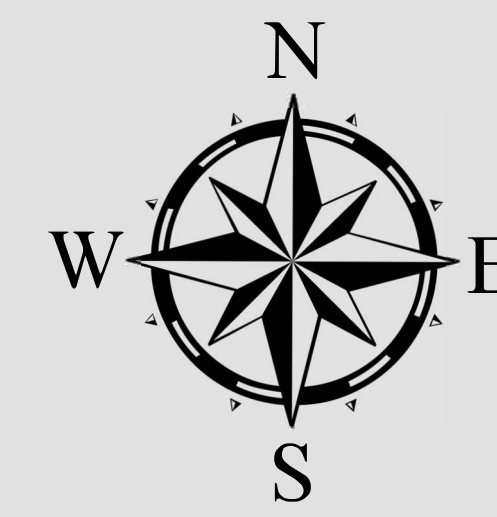




# PRECINCT 545

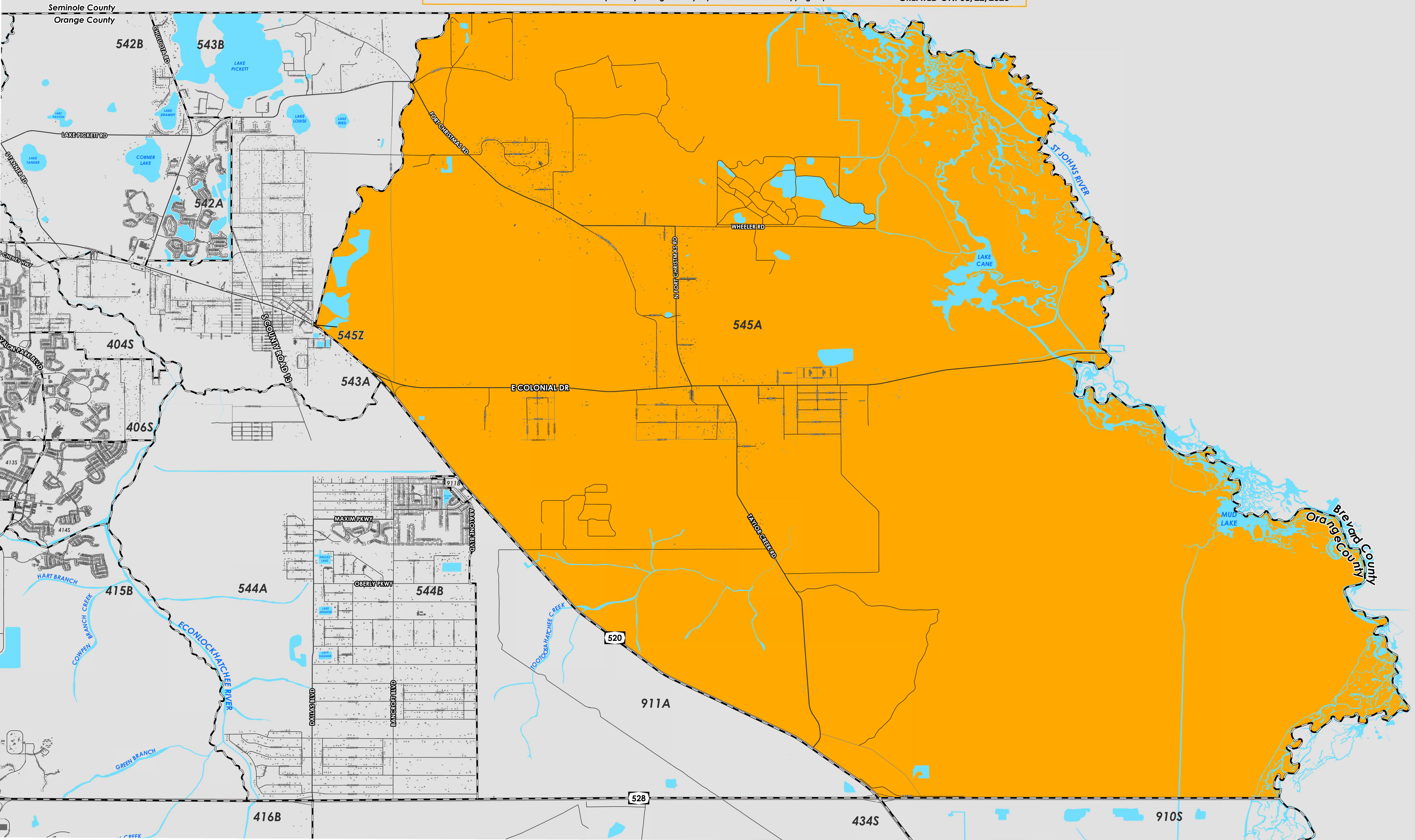
COUNTY PRECINCTS

PRECINCT	U.S. CONGRESS	SENATE	HOUSE	COMMISSION	SCHOOL	CITY	CITY PRECINCT	SPECIAL DIST.
545A	8	17	35	5	1			
545Z	10	17	35	5	1			



Prepared by: Orange County Supervisor of Elections Mapping Department

CREATED ON: 08/22/2023



Precinct 545 (2024) northern boundary follows the Seminole/Orange County border. The western boundary follows west of Brown Road and Dill Road and extends along State Road 520. The southern boundary follows along State Road 528 south of Yates Road. The eastern boundary follows along the Brevard/Orange County border east of St. Johns River, Mud Lake, and Lake Cane.

Precinct 545 contains a sub precinct of:

545A is with district assignments of U.S. Congress 8, State Senate 17, State House 35, County Commission 5, and School Board 1.

545Z is with district assignments of U.S. Congress 10, State Senate 17, State House 35, County Commission 5, and School Board 1.

For more detailed views of other county and municipal precincts, [visit the District and Precinct Maps page](#). For more information about precinct boundaries, contact the [Orange County Supervisor of Elections office](#)

This map was produced by the Orange County Supervisor of Elections Mapping Department. Additional voter information can be found [on our website](#).