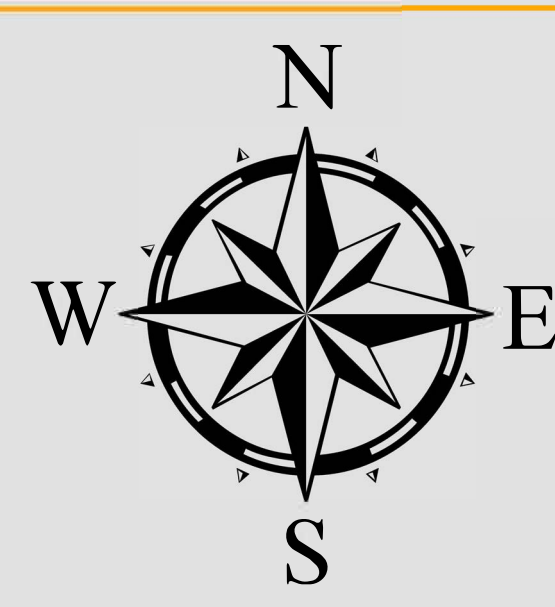




PRECINCT 543

COUNTY PRECINCTS

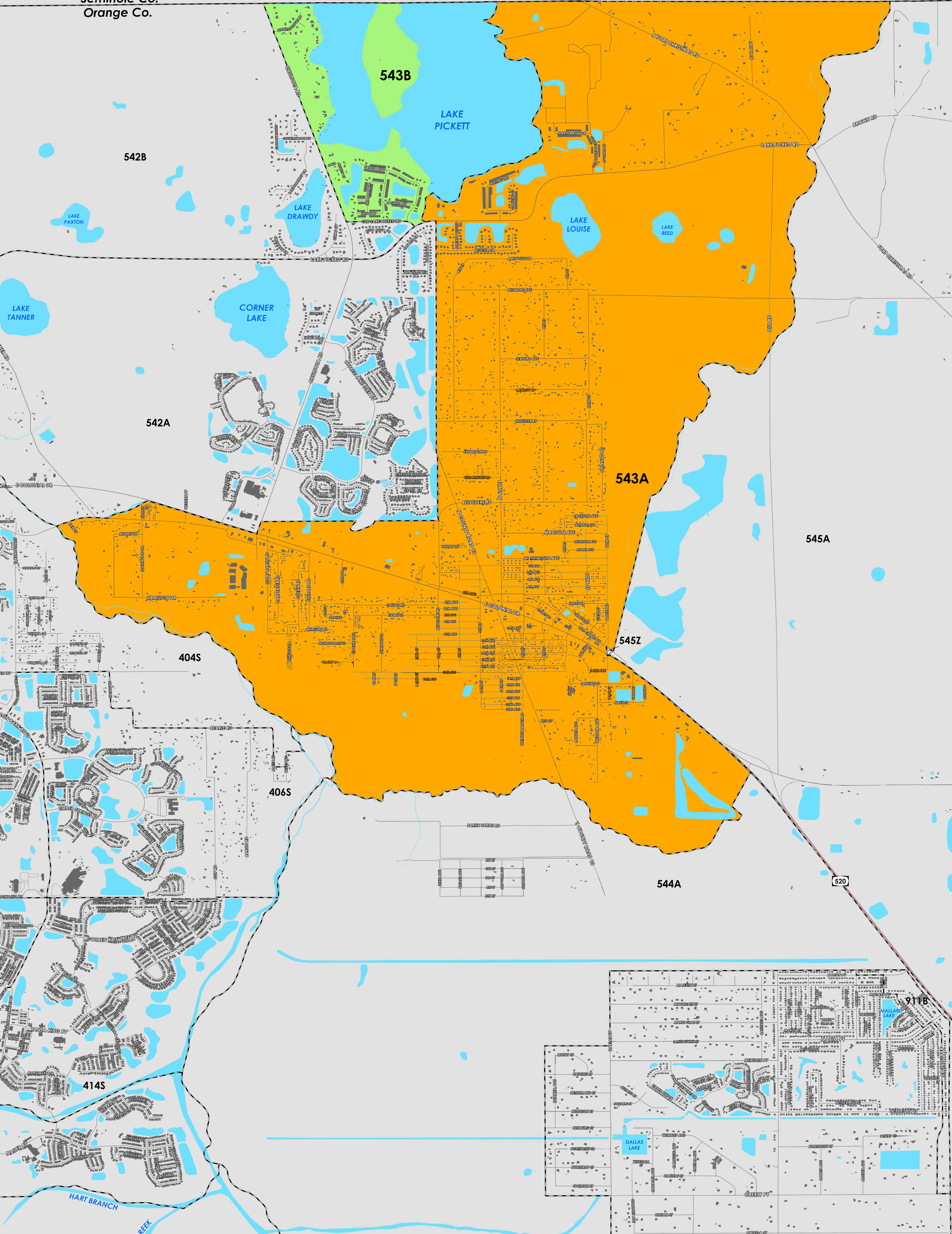
PRECINCT	U.S. CONGRESS	SENATE	HOUSE	COMMISSION	SCHOOL	CITY	CITY PRECINCT	SPECIAL DIST
543A	10	17	35	5	1			
543B	10	17	37	5	1			



Prepared by: Orange County Supervisor of Elections Mapping Department

CREATED ON: 11/06/2023

Seminole Co.
Orange Co.



Precinct 543 (2024) northern boundary follows a combination along the Seminole/Orange County and continues south of Darlin Circle, East Colonial Drive and extends to Old Cheney Highway. The western boundary follows a road combination of Chuluota Road, parallel west of 4th Street, and extends alongside the Econlockhatchee River. The southern boundary follows parallel north of Partin Farms Road and extends southeast of Wellon Avenue. The eastern boundary follows east of Nash Street and East Orlando Road then continues east of Lake Reed and extends east of Lazy H Lane.

Precinct 543 contains sub precincts of:

543A is with district assignments of U.S. Congress 10, State Senate 17, State House 35, County Commission 5, and School Board 1.

543B is with district assignments of U.S. Congress 10, State Senate 17, State House 37, County Commission 5, and School Board 1.

For more detailed views of other county and municipal precincts, [visit the District and Precinct Maps page](#). For more information about precinct boundaries, contact the [Orange County Supervisor of Elections office](#)

This map was produced by the Orange County Supervisor of Elections Mapping Department. Additional voter information can be found [on our website](#).