

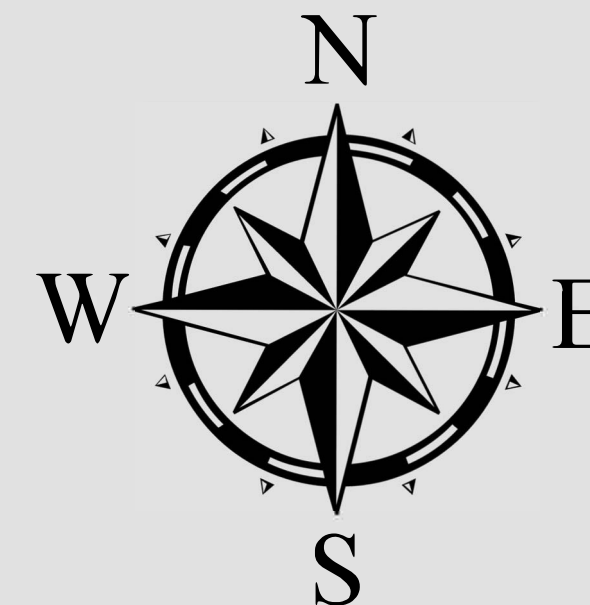


# PRECINCT 542

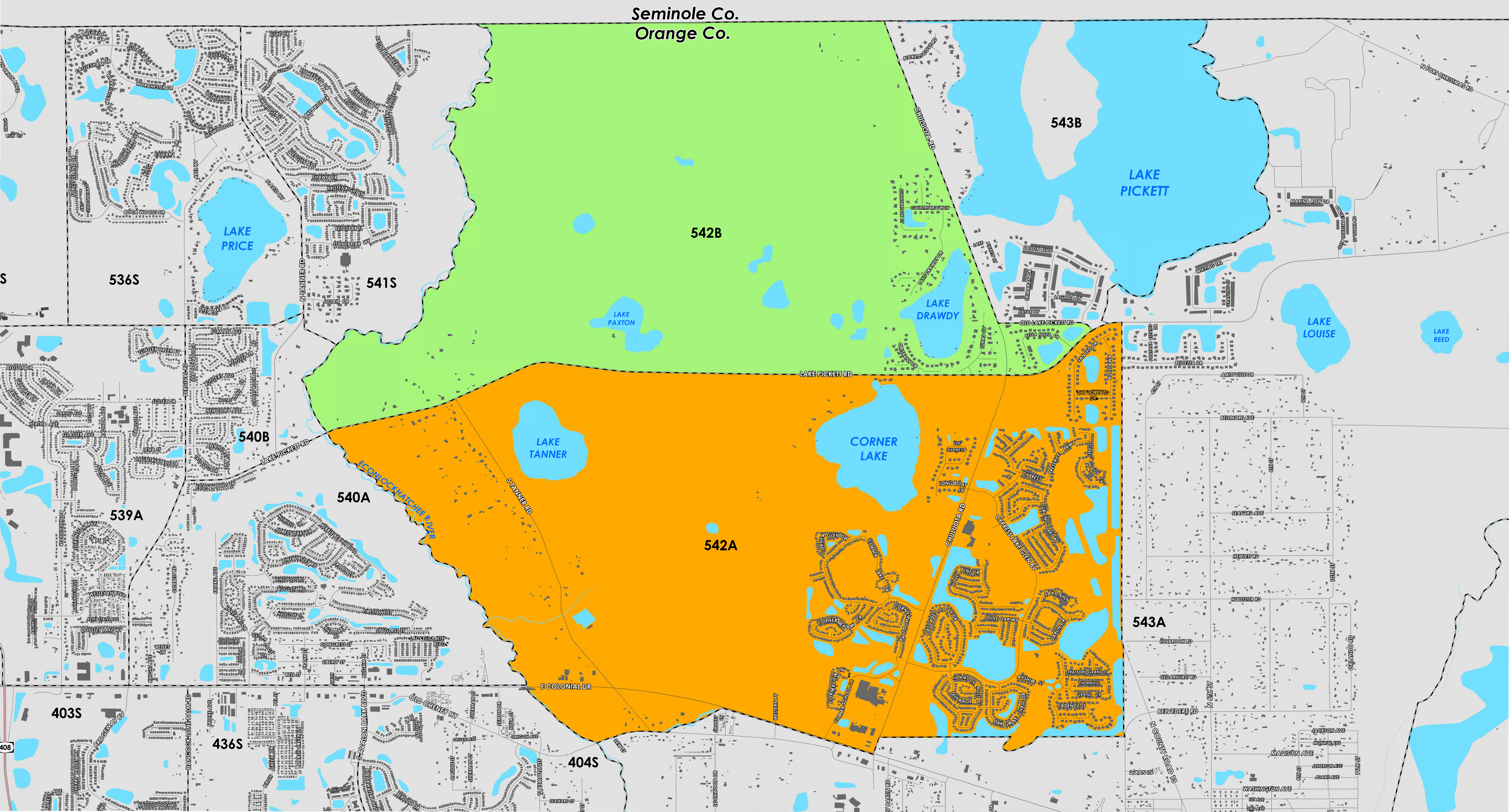
COUNTY PRECINCTS

PRECINCT	U.S. CONGRESS	SENATE	HOUSE COMMISSION	SCHOOL	CITY	CITY PRECINCT	SPECIAL DIST
542A	10	17	35	5	1		
542B	10	17	37	5	1		

Prepared by: Orange County Supervisor of Elections Mapping Department



CREATED ON: 11/06/2023



Precinct 542 (2024) northern boundary follows a road combination of Lake Pickett Road, Old Lake Pickett Road and extends to the Seminole/Orange County border. The western boundary follows alongside the Econlockhatchee River and extends west of South Tanner Road. The southern boundary follows a combination of Old Cheney Highway, East Colonial Drive and extends south of Deer Drive and Oak Grove Chase Drive. The eastern boundary follows a road combination alongside North County Road 13, parallel west of 4<sup>th</sup> Street then parallel east of Amalfi Drive and extends along Chuluota Road.

Precinct 542 contains sub precincts of:

542A is with district assignments of U.S. Congress 10, State Senate 17, State House 35, County Commission 5, and School Board 1.

542B is with district assignments of U.S. Congress 10, State Senate 17, State House 37, County Commission 5, and School Board 1.

For more detailed views of other county and municipal precincts, [visit the District and Precinct Maps page](#). For more information about precinct boundaries, contact the [Orange County Supervisor of Elections office](#)

This map was produced by the Orange County Supervisor of Elections Mapping Department. Additional voter information can be found [on our website](#).