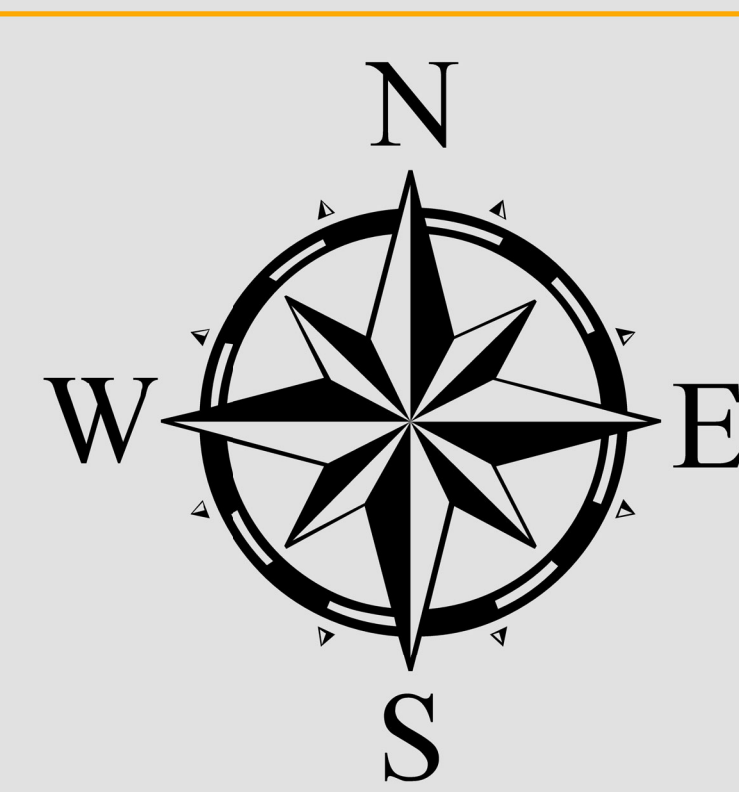




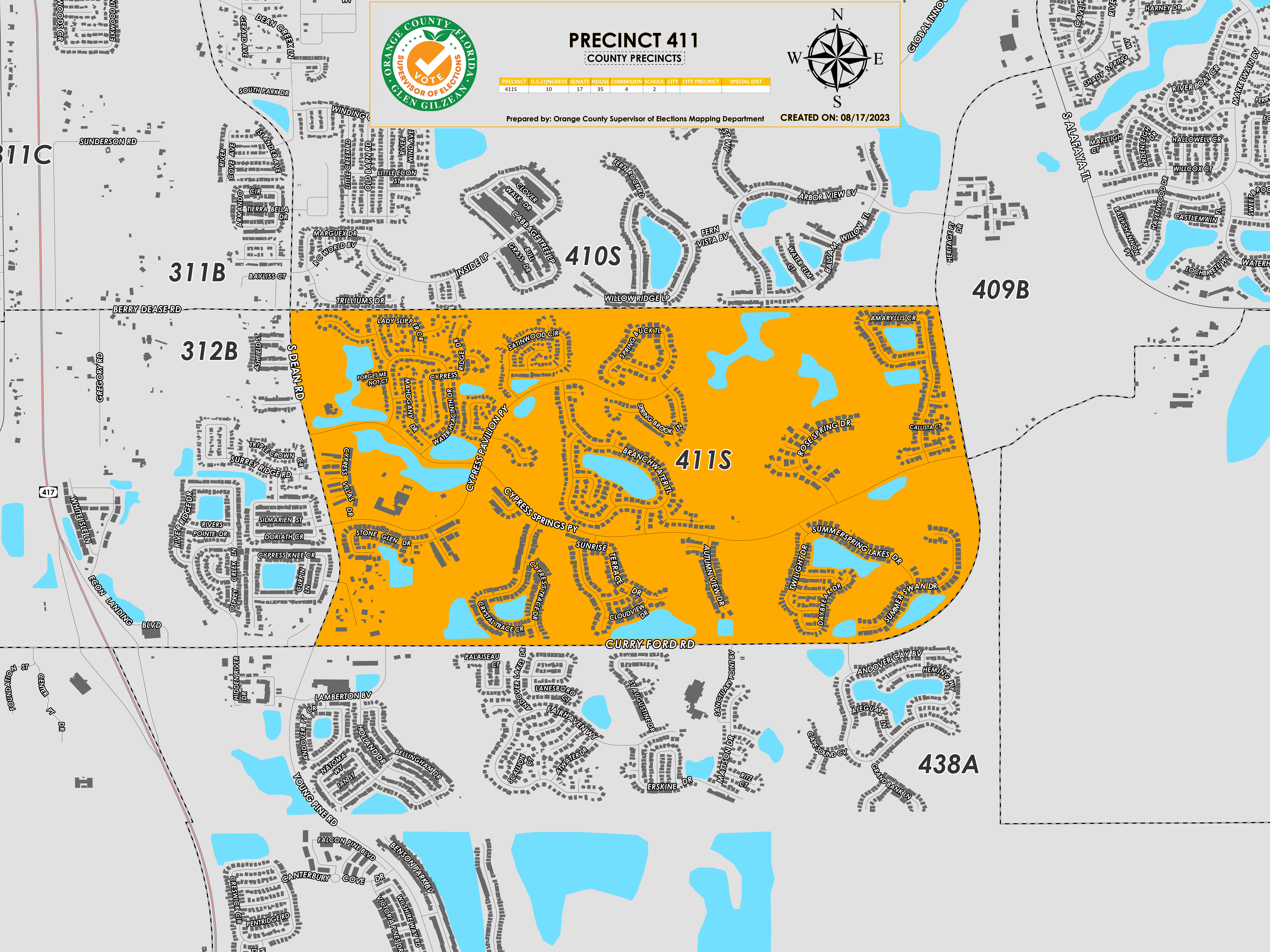
PRECINCT 411

COUNTY PRECINCTS

PRECINCT	U.S. CONGRESS	SENATE	HOUSE COMMISSION	SCHOOL	CITY	CITY PRECINCT	SPECIAL DIST
411S	10	17	35	4	2		



Prepared by: Orange County Supervisor of Elections Mapping Department CREATED ON: 08/17/2023



311B

312B

410S

409B

411S

438A

Precinct 411 (2024) northern boundary follows parallel north along Lady Slipper Circle, Satinwood Circle, Spring Buck trail and Amaryllis Circle. The western boundary follows along South Dean Road. The southern and eastern boundary follows along Curry Ford Road.

Precinct 411S is with district assignments of U.S. Congress 10, State Senate 17, State House 35, County Commission 4, and School Board 2.

For more detailed views of other county and municipal precincts, [visit the District and Precinct Maps page](#). For more information about precinct boundaries, contact the [Orange County Supervisor of Elections office](#)

This map was produced by the Orange County Supervisor of Elections Mapping Department. Additional voter information can be found [on our website](#).