



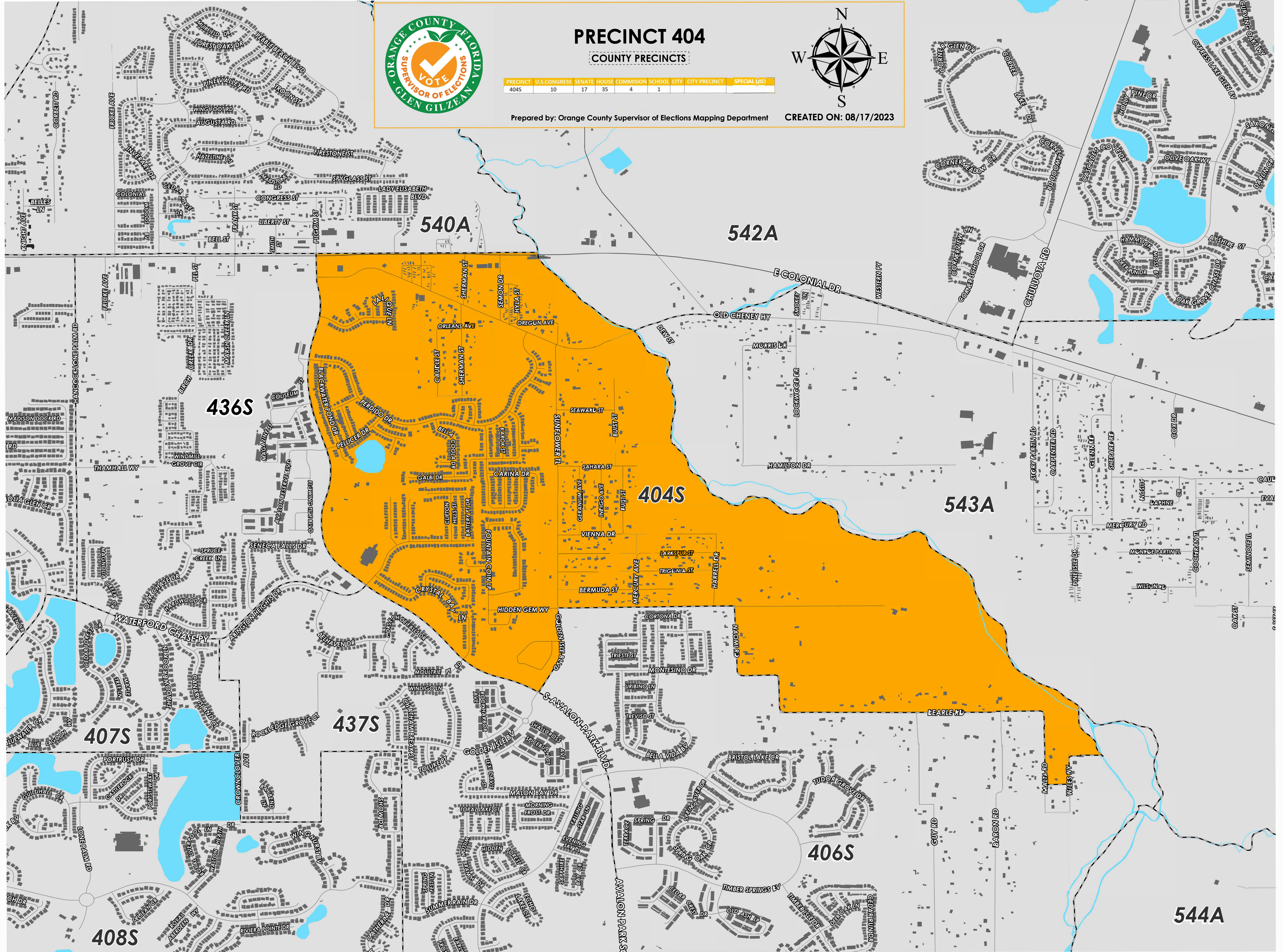
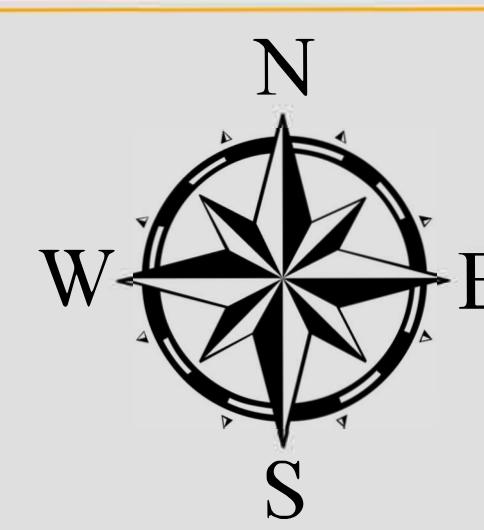
# PRECINCT 404

COUNTY PRECINCTS

PRECINCT	U.S. CONGRESS	SENATE	HOUSE	COMMISSION	SCHOOL	CITY	CITY PRECINCT	SPECIAL DIST
404S	10	17	35	4	1			

Prepared by: Orange County Supervisor of Elections Mapping Department

CREATED ON: 08/17/2023



Precinct 404 (2024) northern boundary follows along a section of East Colonial Drive. The western boundary follows along S Avalon Park Boulevard; the southern boundary follows along a road combination starting from Golden Isle Boulevard to Sunflower Trail, Naomi Road, Bearle Road and extends down to Wiles Way. The eastern boundary follows along the Econlockhatchee River.

404S is with district assignments of U.S. Congress 10, State Senate 17, State House 35, County Commission 4, and School Board 1.

For more detailed views of other county and municipal precincts, [visit the District and Precinct Maps page](#). For more information about precinct boundaries, contact the [Orange County Supervisor of Elections office](#)

This map was produced by the Orange County Supervisor of Elections Mapping Department. Additional voter information can be found [on our website](#).