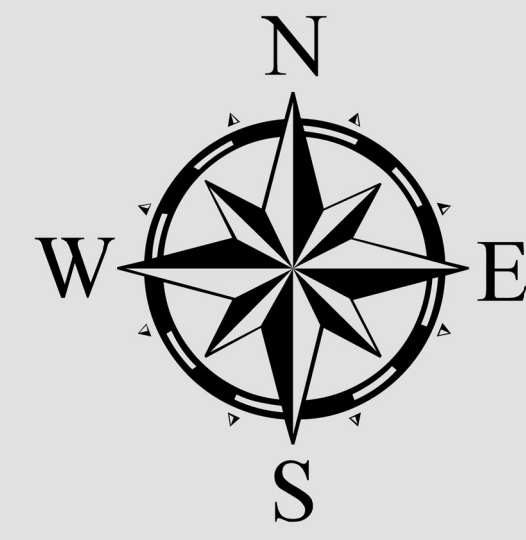




POLLING PLACE

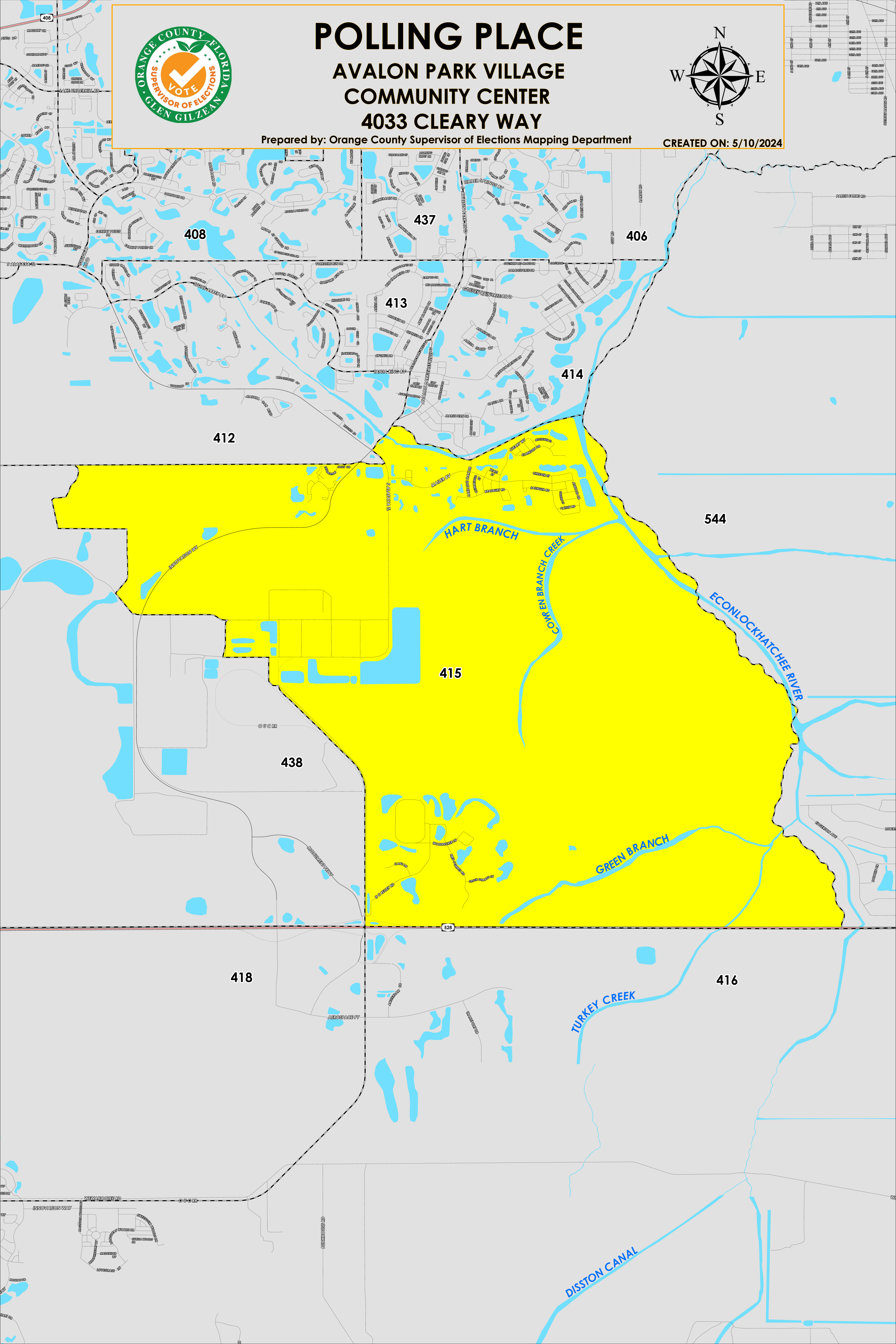
AVALON PARK VILLAGE COMMUNITY CENTER

4033 CLEARY WAY



Prepared by: Orange County Supervisor of Elections Mapping Department

CREATED ON: 5/10/2024



The Polling Place for Precinct 415 is Avalon Park Village Community Center at 4033 Cleary Way.

Precinct 415 (2024) northern boundary follows along a section of the Econlockhatchee River then continues onto South Avalon Park Boulevard where the boundary extends perpendicular to South Alafaya Trail. The western boundary traverses south across Innovation way then down between Monument Parkway and H.C. Kelley Road and stops at State Road 528. The southern boundary follows along State Road 528, and the eastern boundary follows alongside of the Econlockhatchee River.

Precinct 415 contains sub precincts of:

415A is with district assignments of U.S. Congress 10, State Senate 17, State House 35, County Commission 4, and School Board 2.

415B is with district assignments of U.S. Congress 10, State Senate 17, State House 35, County Commission 4, and School Board 1.

For more detailed views of other county and municipal precincts, [visit the District and Precinct Maps page](#). For more information about precinct boundaries, contact the [Orange County Supervisor of Elections office](#)

This map was produced by the Orange County Supervisor of Elections Mapping Department. Additional voter information can be found [on our website](#).