



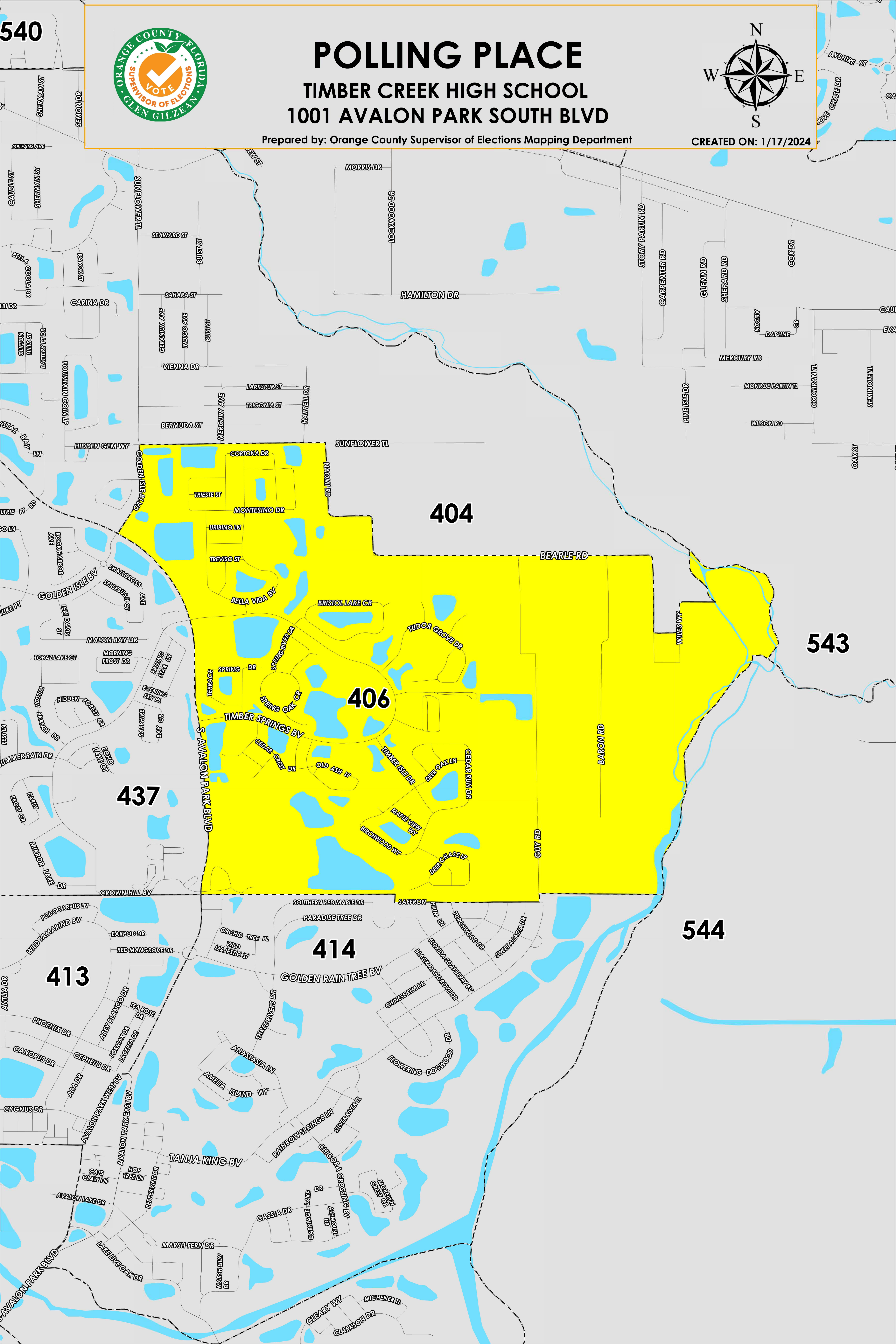
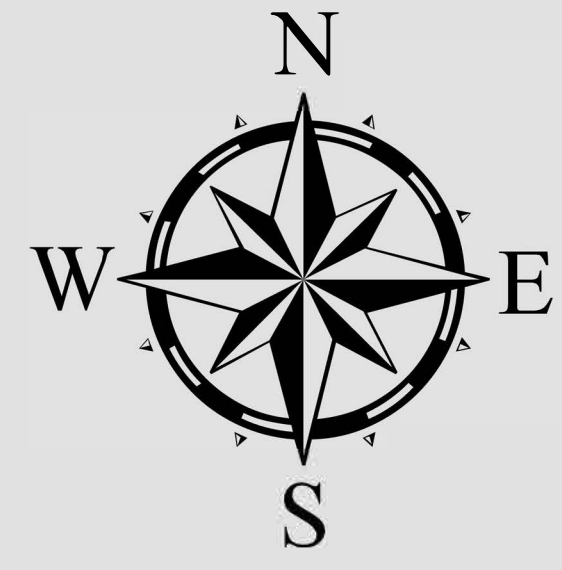
POLLING PLACE

TIMBER CREEK HIGH SCHOOL

1001 AVALON PARK SOUTH BLVD

Prepared by: Orange County Supervisor of Elections Mapping Department

CREATED ON: 1/17/2024



437

404

406

543

544

413

414

The Polling Place for Precinct 406 is Timber Creek High School at 1001 Avalon Park South Boulevard.

Precinct 406 (2024) northern boundary follows along Sunflower Trail and continues onto Bearle Road and a section of Econlockhatchee River. The western boundary follows along from Golden Isle Drive to South Avalon Park Boulevard. The southern boundary follows parallel north of Southern Red Maple Drive and Saffron Plum Lane and extends just east of the Econlockhatchee River. The eastern boundary follows along up the Econlockhatchee River and stops just north of Wiles Way.

Precinct 406S is with district assignments of U.S. Congress 10, State Senate 17, State House 35, County Commission 4, and School Board 1.

For more detailed views of other county and municipal precincts, [visit the District and Precinct Maps page](#). For more information about precinct boundaries, contact the [Orange County Supervisor of Elections office](#)

This map was produced by the Orange County Supervisor of Elections Mapping Department. Additional voter information can be found [on our website](#).