

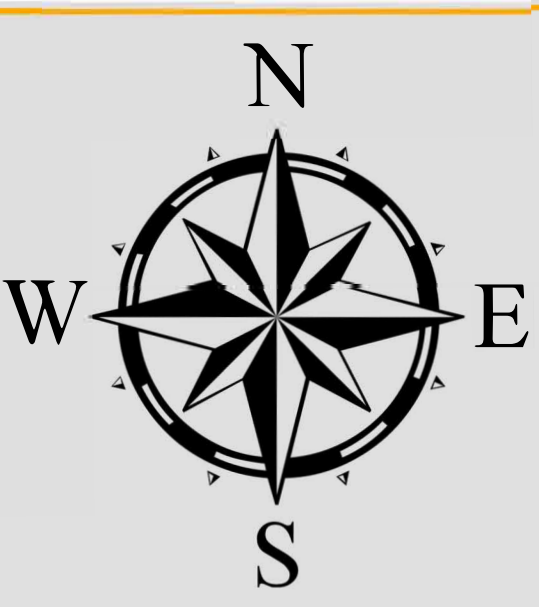


PRECINCT 137

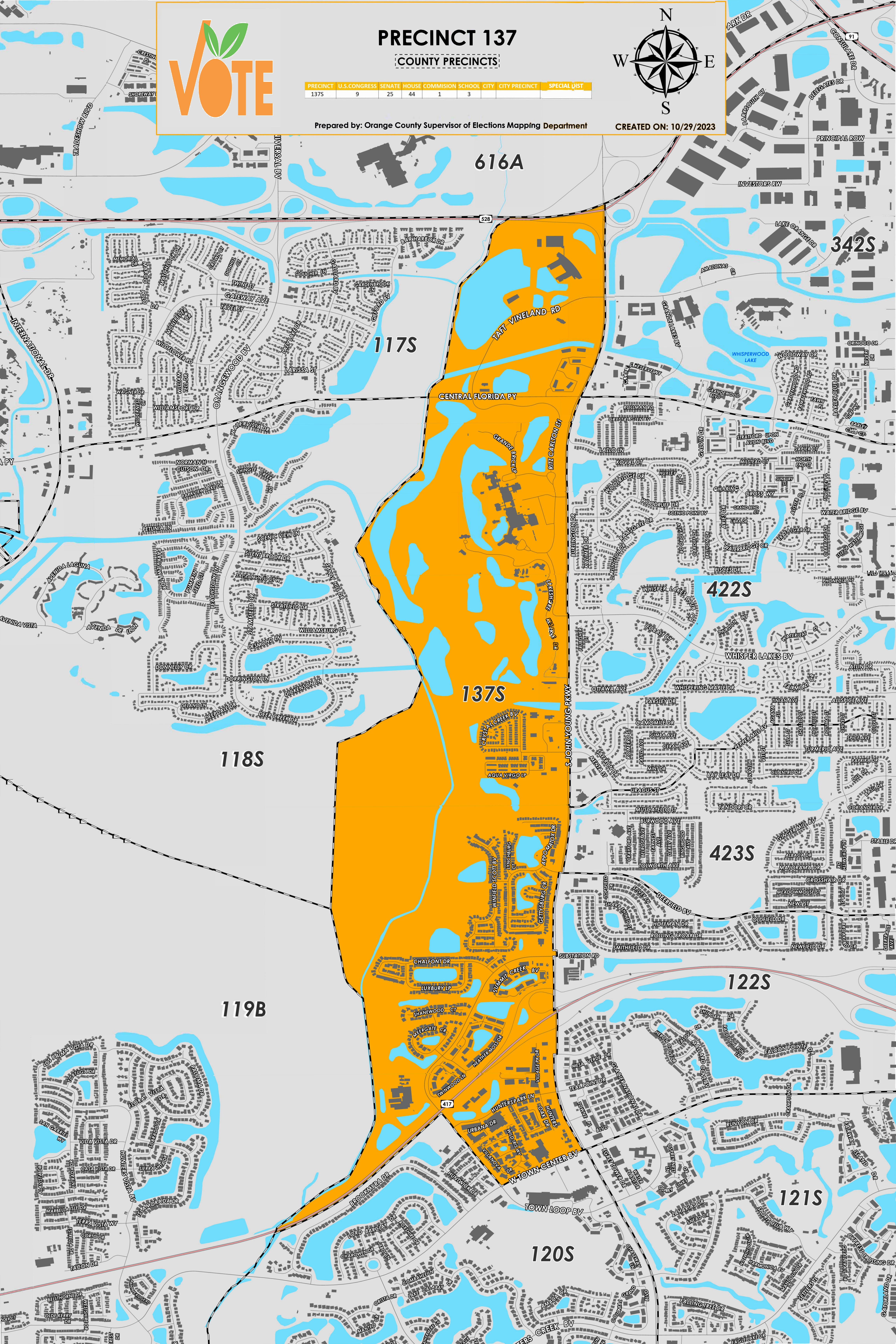
COUNTY PRECINCTS

PRECINCT	U.S.CONGRESS	SENATE	HOUSE	COMMISSION	SCHOOL	CITY	CITY PRECINCT	SPECIAL DIST
137S	9	25	44	1	3			

Prepared by: Orange County Supervisor of Elections Mapping Department



CREATED ON: 10/29/2023





Precinct 137 (2024) northern boundary follows along State Road 528. The western boundary follows a combination along the Shingle Creek, parallel east of Bar harbor Drive, Scenic View Lane, Sandy Hill Drive and extends east of Paloma Drive and Islamorada Drive. The southern boundary follows along State Road 417 parallel north of Brookmyra Drive and extends to Town Center Boulevard. The eastern boundary follows along South John Young Parkway.

Precinct 137S is with district assignments of U.S. Congress 9, State Senate 25, State House 44, County Commission 1, and School Board 3.

For more detailed views of other county and municipal precincts, [visit the District and Precinct Maps page](#). For more information about precinct boundaries, contact the [Orange County Supervisor of Elections office](#)

This map was produced by the Orange County Supervisor of Elections Mapping Department. Additional voter information can be found [on our website](#).