



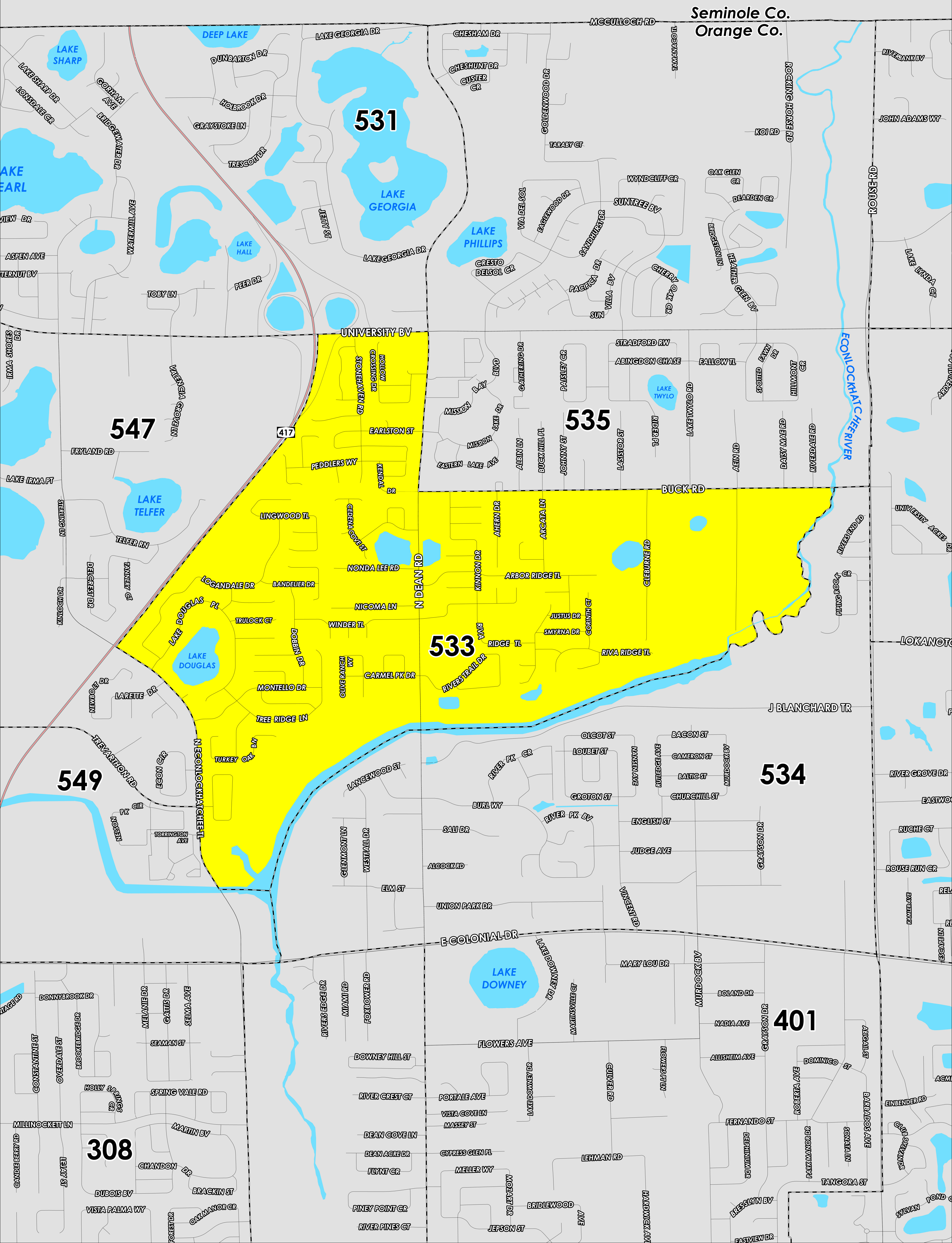
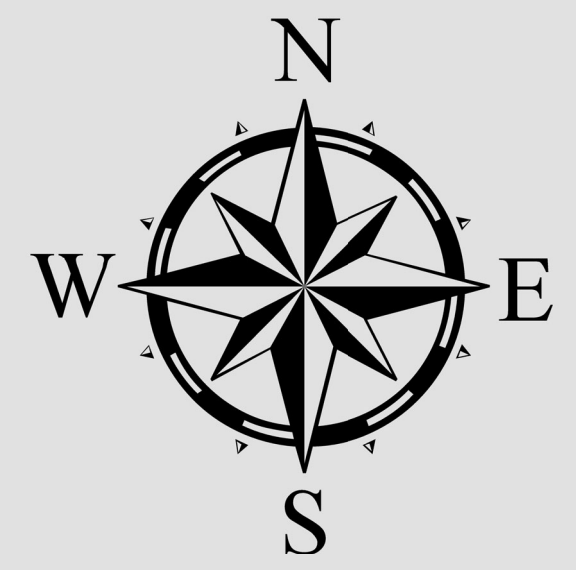
POLLING PLACE

HOPE LUTHERAN CHURCH

2600 N DEAN RD

Prepared by: Orange County Supervisor of Elections Mapping Department

CREATED ON: 1/26/2024



The Polling Place for Precinct 533 is Hope Lutheran Church at 2600 N Dean Road.

Precinct 533 (2024) northern boundary follows Buck Road and extends to University Boulevard. The western boundary follows along State Road 417 and extends to North Econlockhatchee Trail. The southern boundary follows alongside the Econlockhatchee River into the eastern boundary. The eastern boundary continues to North Dean Road.

Precinct 533S is with district assignments of U.S. Congress 10, State Senate 17, State House 37, County Commission 5, and School Board 1.

For more detailed views of other county and municipal precincts, [visit the District and Precinct Maps page](#). For more information about precinct boundaries, contact the [Orange County Supervisor of Elections office](#)

This map was produced by the Orange County Supervisor of Elections Mapping Department. Additional voter information can be found [on our website](#).