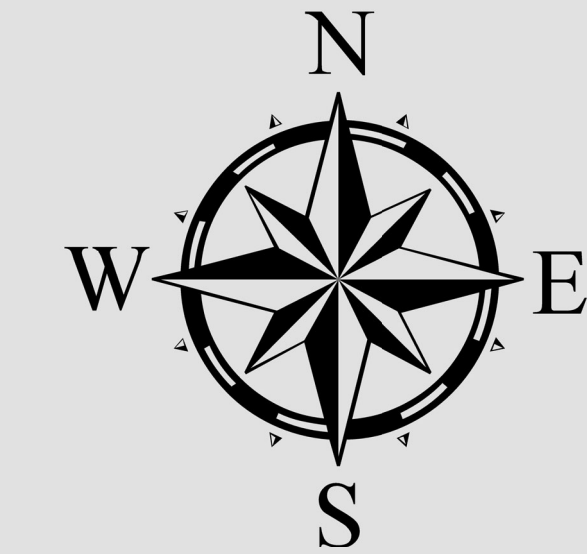




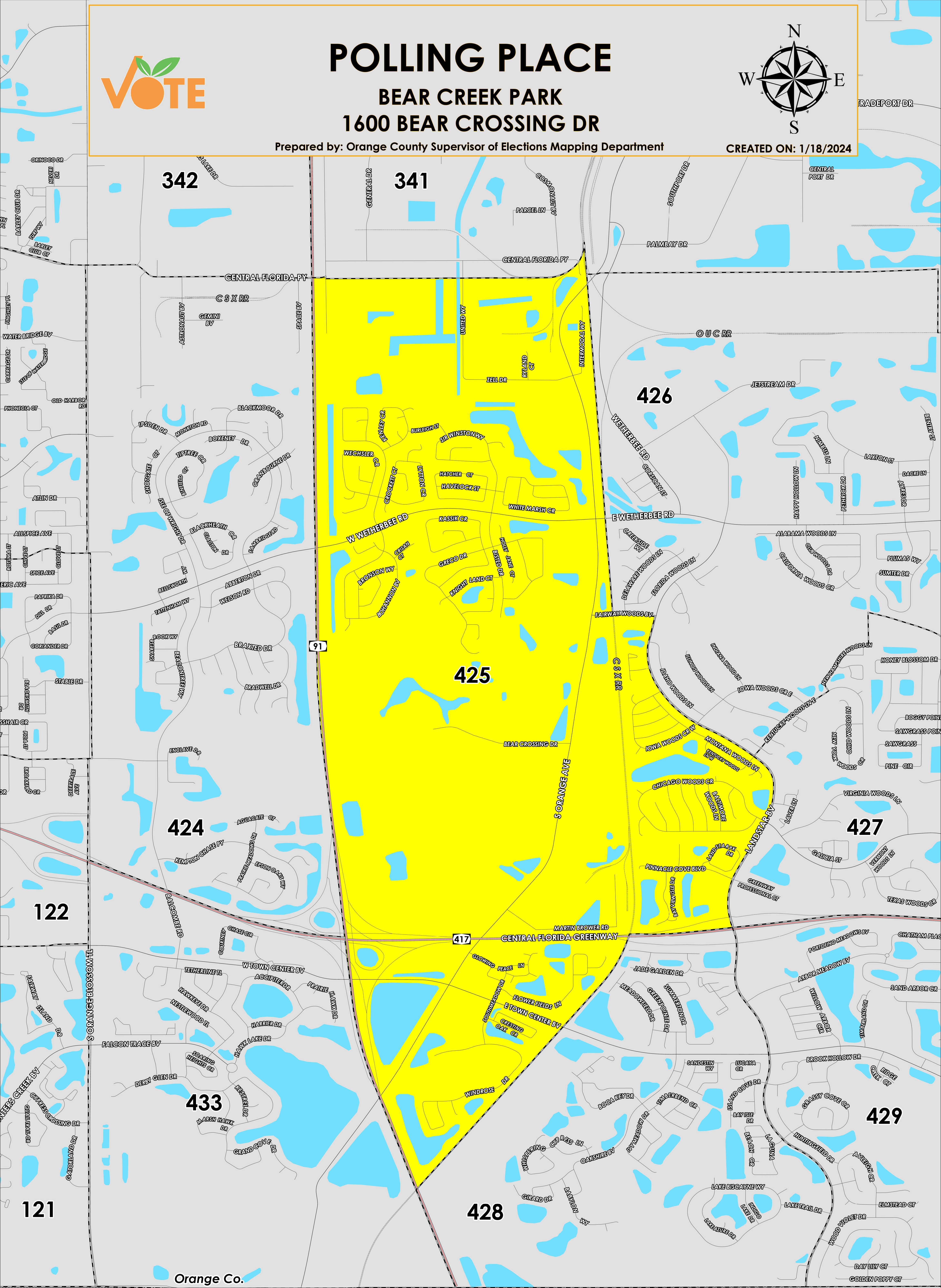
POLLING PLACE

BEAR CREEK PARK
1600 BEAR CROSSING DR

Prepared by: Orange County Supervisor of Elections Mapping Department



CREATED ON: 1/18/2024



Orange Co.
Osceola Co.

The Polling Place for Precinct 425 is Bear Creek Park at 1600 Bear Crossing Drive.

Precinct 425 (2024) northern boundary follows parallel south of Central Florida Parkway. The western boundary follows along Florida Turnpike (State Road 91). The southern boundary is perpendicular to Florida Turnpike and traverse parallel south of Windrose Drive, crosses East Town Center Boulevard and continues onto State Road 417. The eastern boundary follows along Landstar Boulevard and continues parallel east of South Orange Avenue and Intermodal Way.

Precinct 425 contains sub precincts of:

425A is with district assignments of U.S. Congress 9, State Senate 25, State House 44, County Commission 4, and School Board 3.

425B is with district assignments of U.S. Congress 9, State Senate 25, State House 47, County Commission 4, and School Board 3.

For more detailed views of other county and municipal precincts, [visit the District and Precinct Maps page](#). For more information about precinct boundaries, contact the [Orange County Supervisor of Elections office](#)

This map was produced by the Orange County Supervisor of Elections Mapping Department. Additional voter information can be found [on our website](#).